

**EASTMAN
PROFESSIONAL
PHOTOGRAPHIC
APPARATUS
1930**

ME 25700FF
Film - 25%

**EASTMAN
KODAK CO.
ROCHESTER, N. Y.**

Eastman Kodak Stores, Inc.
806 Huron Road
347 Euclid Avenue
1915 East Ninth Street
CLEVELAND, OHIO

RETURN TO
O. L. POTTER

Catalogue of
Eastman Professional
Photographic Apparatus
and Materials

1930

CENTURY, F. & S., Cirkut,
Sterling and Crown products,
formerly manufactured by the
Eastman Kodak Company
(Folmer & Schwing Depart-
ment) are now made by

THE FOLMER GRAFLEX CORPORATION
ROCHESTER, NEW YORK

For Sale by
EASTMAN KODAK COMPANY
ROCHESTER, NEW YORK

To the Profession

THE merchandise described in this catalogue may be found displayed in the store of any dealer in professional photographic apparatus where it may be examined and its operation fully explained. If an item is not in stock the dealer may order it direct from Rochester or from the branch nearest him, in New York, Chicago or San Francisco, except studio apparatus which should be ordered either from Rochester or San Francisco.

Eastman Kodak Company,

ROCHESTER, N. Y.

New York: 350 Hudson Street.

Chicago: 18th Street and Indiana Ave.

San Francisco: 241 Battery Street.

Alphabetical Index

A	Page
Abrasive Reducer, Eastman	52
Adapter Backs, Reversible, for Studio Cameras	11
Adjustable Lens Hood, Eastman	26
Ad-Type Paper	60
Athena, Vitava Paper	60-62
Amateur Printer, Kodak	21
Anastigmat Lenses, Kodak	27
Aprons	47-48
Alba, Vitava Paper.	61
Auto-Focus Enlarger, Eastman	17
Auto-Focus Enlarger, Kodak	19
Azo Paper	68-71
B	
Backs	
Adapter, Reversible, for Studio Cameras	11
Reducing for Eastman View Cameras	13
Bellows, Camera	30
Binders, Eastman Lantern Slide	49
Blotting Paper	52
Book, Wratten Experimental Film Filter	32
Books on Photography	32
Boxes	
Indirect Light	34
Eastman Developing and Fixing	35
Eastman Hard Rubber Fixing	37
R. O. C. Hard Rubber Fixing	37
Eastman Lantern Slide	45
Brace, Eastman Tripod	25
Brass Forms	43
Bromide Papers	72-75
Brushes	50-51
Bulbs and Tubing, Camera	26
C	
Cameras	
Cirkut	16
Eastman Clinical Camera	15
Eastman View, No. 2	12
Eastman View, 11x14	13
Revolving Back Enlarging	14
Studio	9-11
Camera Bellows	30
Camera Bulbs and Tubing	26
Cards, Post	77
Carriage, Sliding Ground Glass	11
Case, Number of Packages per	78
Century Semi-Centennial Stand	23
Century Studio Outfits	
No. 4A	11
No. 10A	9
No. 8A	10
Century Studio Stands	23
Century Tripods	24
Cepa Paper	43
Chart, Eastman Mask	22
Cirkut Film	59
Clips	
Eastman Film Developing	39
Kodak Film	38
Kodak Junior Film	38
Cloth, Focusing	29
Colors, Spotting	50
Commercial, Commercial Matte and Commercial Ortho Film	58
Commercial Panchromatic Film	59
Commercial Plates, Eastman	56
Compact Stand, Folmer	24
Core Plate Developing Racks	39
Cotton, Eastman Filter	52
Cover Glass, Lantern Slide	53
Crown Tripod	24
D	
Delivery Envelopes, Photo Finisher	54-55
Developing and Fixing Boxes	35
Developing Hangers	
Eastman Film	37
Film Pack	38
Developing Racks, Core Plate	39
Diffusion Disks, Eastman Portr.	27
Diffusing Discs, Eastman	28
Disk Holders, Eastman	
Adjustable	27
Dressing, Kodak Leather	52
Drying Rack, Eastman Film and Plate	44
Dry Mounting Press, Kodak	41
Dry Mounting Tissue, Kodak	48

E	Page
Eastman Automatic Tray Siphon	40
Eastman Clinical Camera	15
Eastman Film	58-59
Eastman Projection Printer	18
Eastman Vignetter	25
Eastman Printer No. 1	21
Eastman Professional Printer	20
Eastman View Camera No. 2	12
Eastman View Camera 11x14	13
Embossor, Eastman Print	42
Enlarging Camera, Revolving	
Back	14
Enlarger, Eastman Auto-Focus	17
Enlarger, Kodak Auto-Focus	19
Envelopes, Photo Finishing	
Delivery	54-55
Etching Brown, Vitava Paper	61
Etching Knife, Eastman	50
F	
Fabric, Orange and Ruby	43
Ferrotypes Plates, Special	49
Film, Eastman Portrait, Commercial Ortho, Commercial Matte, Process and Panchromatic	58-59
Kotava, Safety Positive	60
Film for Cirkut Cameras	59
Film Clip, Kodak	38
Kodak Jr.	38
Film Developing Clip, Eastman	39
Film Developing Hangers, Eastman	37
Film Filter Book, Wratten	32
Film Hangers, Eastman	38
Film Holders	
Eastman	28
Sterling	28
Film Holder Slides	29
Film Loading Fixture No. 2 and No. 4, Eastman	38
Film Pack Developing Hangers	38
Film and Plate Drying Rack, Eastman	44
Film Sheaths, Eastman	28
Film Washing Tank, Eastman	36
Filter Cotton, Eastman	52
Filter Holder, Eastman Adjustable	32
Filter Test Chart, Eastman	32
Filters, Wratten	30-32
Finger Tips, Rubber	48
Fixing Boxes	
Eastman Developing and Eastman Hard Rubber	35
R. O. C. Hard Rubber	37
Flashed Opal Glass	53
Fluid, Eastman Retouching	50
Focusing Cloth	29
Forms, Brass	43
Four-in-One Groupers, Eastman	26
Frames, Printing	21
G	
Glass	
Ground	53
Lantern Slide Cover, Eastman	53
Opal, Flashed	53
Orange and Ruby, Eastman	44
Glasses	
Retouching or Magnifying	40
Gloves, Rubber	48
Glue, Kodak Liquid	49
Graduates	46
Ground Glass Carriage, Sliding	11
Ground Glass, Fine	53
Ground Glass Substitute	53
Groupers, Eastman Four-in-One	26
Gum Paper	49
H	
Hangers	
Eastman Film	38
Eastman Film Developing	37
Film Pack Developing	38
Holdrs	
Eastman Film Holders	28
Sterling Film Holders	28
Eastman Plate Holders	29
Sterling Plate Holders	29
Holder Slides, Plate and Film	29
Holders, Eastman Adjustable	
Disk	27
Holders, Eastman Adjustable	
Filter	32
Home Portrait Reflector, Eastman	25
Hood, Eastman Adjustable Lens	26
Hydrometer, Eastman Tested	45

	Page		Page
I		Masks, Kodaloid Printing	22
India Ink	50	Measuring Jug, Eastman	46
Indirect Light Boxes	34	Metal Trimmer, Eastman	42
Insurance Bromide Paper	75	Mounting Press, Kodak Dry	41
Interval Timer, Kodak	46	Mounting Tape, Eastman Double Coated	49
J		Mounting Tissue, Kodak Dry	48
Jug, Eastman Measuring	46		
K		N	
Kits		Negative Racks	44
Plate Holder	29	Negative Washer, R. O. C.	36
Knife, Eastman Etching	50	Nepera Waxing Solution	52
Kodak Amateur Printer	21	News Bromide, Eastman	73
Kodak Anastigmat Lenses	27		
Kodak Auto-Focus Enlarger	17	O	
Kodak Dry Mounting Press	41	Ortho, Commercial Film	58
Kodak Interval Timer	46	Ortho Plates, Eastman	56-57
Kodak Service Printer	19	Opal Glass, Flashed	53
Kodak Print Washer	39	Opal Paper, Vitava	63
Kodak Velvet Green Paper	67-68	Opaque, Eastman	51
Kodalak	51	Orange Fabric	43
Kodaline Bromide, Eastman	75		
Kodalite	35	P	
Kodaloid	22	Packages Per Case	78
Kodaloid Masks	22	Paddle, Eastman Print	47
Kotava Safety Positive Film	60	Panchromatic Film, Eastman Portrait, Commercial and Process	59
L		Paper	
Laboratory Aprons	48	Ad-Type Paper	60
Lacquer, Kodalak No. 4	51	Azo	68-71
Lamps		Eastman Bromide	72-73
Brownie Safelight	34	P. M. C. Bromide	73-75
Eastman Safelight	34	Eastman News Bromide	73
Kodak Safelight	34	Eastman Solar Bromide	75
Wratten Safelight	33	Eastman Insurance Bromide	75
Lantern Slide Binders, Eastman	49	Eastman Kodaline Bromide	75
Lantern Slide Boxes, Eastman	45	Blotting	52
Lantern Slide Cover Glass	53	Eastman Post Office	43
Lantern Slide Plates	57	Gelatine Printing Out Papers	76
Leather Dressing, Kodak	52	Gum	49
Lens Hood, Eastman Adjustable	26	Cepa	43
Lenses	27	Post Office	43
Lights, Kodalite	35	Proof Paper	76
Light Boxes for Dark Rooms, Indirect	34	Kodak Velvet Green	67-68
Liquid Glue, Kodak	49	Translite Paper, Eastman	63
Loading Fixture, Eastman Film	38	Velox	64-66
M		Vitava	60-63
Magnifying Glasses	40	Paste, Eastman Photo	49
Mailers, Safety Photo	52	Kodak Photo	49
Mask Charts, Eastman	22	Pencils, Eastman	50

	Page		Page
Photo Finisher Delivery Envelopes	54-55	Register System, Eastman Studio	54
Photo Mailer, Safety	52	Retouching Fluid, Eastman	50
"Photography of Colored Objects," publication	32	Retouching or Magnifying Glass	40
"Photomicrography," publication	32	Reversible Adapter Backs for Studio Cameras	11
Plates, Eastman	56-57	Revolving Back Enlarging Camera	14
Plate Drying Rack	44	Revolving Print Trimmer, Eastman	43
Plate Holders	29	Rods, Stirring	47
Plate Holder Kits	29	Rollers, Eastman Print	44
Plate Holder Slides	29	Rubber Finger Tips	48
Plates, Special Ferrotype	49	Rubber Aprons	29
Polychrome Plates, Eastman	56	Rubber Focusing Cloth	48
Portrait Diffusion Disks, Eastman	27	Rubber Gloves	43
Portrait Film, Eastman	58-59	Ruby Fabric	48
Portrait Film Washing Tank, Eastman	36		
Positive Film, Kotava Safety	60	S	
Post Cards	77	Safelight Lamps	33-34
Post Card Plates, Eastman	57	Brownie	34
Post Office Paper, Eastman	43	Kodak	34
Press, Kodak Dry Mounting	41	Wratten, Nos. 1 and 2	33
Print Embosser, Eastman	42	Safelights, Wratten	33
Print Paddle, Eastman	47	Safety Photo Mailer	52
Print Rollers, Eastman Single and Double	44	Scales, Eastman Studio	45
Print Trimmers	42	Sheaths, Film, Eastman	28
Print Washer, Kodak	39	Siphon, Eastman Automatic Tray	40
Printers		Slides, Film and Plate Holder	29
Eastman No. 1	21	Sliding Ground Glass Carriage	11
Eastman Professional	20	Solar Bromide Paper	75
Eastman Projection	18	Solio Paper	76
Kodak Amateur	21	Solution, Nepera Waxing	52
Kodak Service	19	Speedway Plates, Eastman	56
Printing Frames	21	Spotting Colors, Eastman	50
Printing Frame, Circuit	22	Spotting Brushes	50
Printing Masks, Kodaloid	22	Squeegee, Eastman Special	44
Process Plates, Eastman	56	Stands	
Professional Tripod	24	Century Studio	23
		Century Semi-Centennial	23
R		Folmer Compact	24
Racks, Negative	44	Sterling Plate Holders	29
Racks, Core Plate Developing	39	Stirring Rods	47
Rapid Black, Vitava Paper	62	Studio Outfits, Century	
Reducing Backs for View Cameras	13	No. 4A	11
Reducer, Eastman Abrasive	52	No. 10A	9
Reflectors		No. 8A	10
Eastman Home Portrait	25	Studio Reflector, Eastman	25
Eastman Studio	25	Studio Register, Eastman	
Register, Eastman Loose Leaf Studio	53	Loose Leaf	53
		System, Eastman Studio Register	54

T	Page		Page
Tanks		Tripod Brace, Eastman	25
Eastman Portrait Film		Tubing, Bulbs and.	26
Washing	36		
Tape, Eastman Double-Coated		V	
Mounting	49	Velox Paper.	64-66
Test Chart, Eastman Filter	32	View Cameras	
Thermometer, Eastman	47	Eastman View 11x14	13
Thermometer Stirring Rod	47	No. 2, Eastman	12
Timer, Eastman	46	Vignettes, Eastman	25
Timer, Kodak Interval	46		
Tissue, Kodak Dry Mounting	48	W	
Trays		Washers	
Bull's Eye	36	Kodak Print	39
Eastman Enameled	36	Eastman Automatic Tray	
Eastman Standard Hard		Siphon	40
Rubber	35	R. O. C. Negative	36
Tray Siphon, Eastman Auto-		Washing Tank, Portrait Film	36
matic	40	Waxing Solution, Nepera	52
Trimmer		Wratten Filters	30-32
Eastman Metal	42	Wratten Safelights	33
Eastman Revolving Print	43	Wratten and Wainwright	
R. O. C.	42	Plates	57
Tripods	24		

Century Studio Outfit No. 10A

THIS most popular camera of the Century line has a 36-inch bellows extension with pedestal support yet is sufficiently compact to use the shortest focus lenses that will cover an 8 x 10 film. The focusing knobs and horizontal and vertical swing adjustments work smoothly and with precision.

The Sliding Ground Glass Carriage has a reversible back which takes the Eastman Film or Plate Holder. An 8 x 10—5 x 7 Adapter Back is also supplied. Wing kits permit one to make two 5 x 8 exposures on an 8 x 10 film or two 3½ x 5 exposures on a 5 x 7 film.

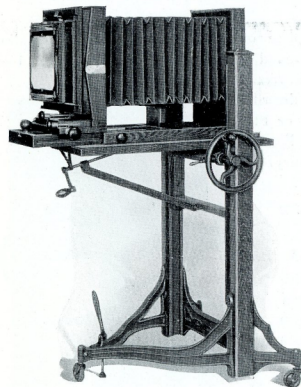
The camera is made of mahogany and cherry in dark flat finish with brass parts in sand-blast finish, giving it an appearance in keeping with its quality. The stand is the Century Semi-Centennial described on page 25.

PRICES

Century Studio Outfit No. 10A complete consists of the 8 x 10 Century Studio Camera No. 10A with Sliding Ground Glass Carriage No. 10A, one 8 x 10—5 x 7 Reversible Adapter Back, two wing kits, one 8 x 10 and one 5 x 7 Eastman Film or Plate Holder* and the Century Semi-Centennial Stand No. 1A \$180.00

WHEN FURNISHED SEPARATELY

Century Studio Camera No. 10A with attachments as above but without camera stand \$120.00
Extra Lens Board, 9 x 9 1.75



*All Century Cameras and Outfits will be equipped with Film Holders unless otherwise specified.

Century Studio Outfit No. 8A

SIZE 11 x 14

THIS 11 x 14 camera is adaptable to a wide range of work. It is fitted with an 11 x 14 Sliding Ground Glass Carriage and has both 8 x 10 and 5 x 7 Adapter Backs with wing kits which permit one to make two 7 x 11 exposures on the 11 x 14; two 5 x 8 exposures on the 8 x 10 or two 3½ x 5 exposures on the 5 x 7 film or plate.

The camera has a bellows extension of 43 inches; a 10 x 10 inch lens board; both vertical and horizontal swings and, in spite of its size, is operated as easily as smaller cameras. Conveniently located focusing knobs, metal rollers between the camera and its bed and large worm screws on swings facilitate its various adjustments.

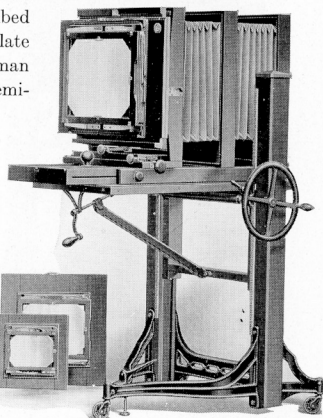
The stand is the Semi-Centennial described on page 23. It is nicely balanced and may be easily operated at any point from 14 to 49 inches from the floor.

Century Studio Outfit No. 8A complete consists of an 11 x 14 Century Studio Camera No. 8A with one Sliding Ground Glass Carriage No. 8A, one 11 x 14—8 x 10 and one 8 x 10—5 x 7 Reversible Adapter Back, three wing kits described above, one 11 x 14 Sterling Film or Plate Holder,* one 8 x 10 and one 5 x 7 Eastman Film or Plate Holder* and the Century Semi-Centennial Stand No. 2A.

Price complete as above . . . \$275.00

WHEN FURNISHED SEPARATELY

Century Studio Camera No. 8A with attachments as above but without camera stand . . . \$210.00
Extra Lens Board, 10 x 10 . . . 2.00

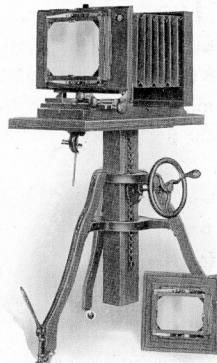


*All Century Cameras and Outfits will be equipped with Film Holders unless otherwise specified.

Century Studio Outfit No. 4A

SIZE 8 x 10

THE 4A is a compact 8 x 10 camera designed for the small studio. It has a bellows extension of 22 inches, a 9 x 9-inch lens board, vertical and horizontal swings, and a Sliding Ground Glass Carriage which permits making two exposures on a film or plate. The equipment also includes one 8 x 10—5 x 7 Reversible Adapter Back and one 8 x 10 and one 5 x 7 Film or Plate Holder. The stand is the Century No. 4A described on page 25.



PRICES

Century Studio Outfit No. 4A complete consists of an 8 x 10 Century Studio Camera No. 4A with Sliding Ground Glass Carriage, one 8 x 10—5 x 7 Reversible Adapter Back, two wing kits for making two 5 x 8 exposures on the 8 x 10 or two 3½ x 5 exposures on the 5 x 7 film or plate, and one 8 x 10 and one 5 x 7 Eastman Film or Plate Holder,* and the Century Studio Stand No. 4A . . . \$150.00

WHEN FURNISHED SEPARATELY

Century Studio Camera No. 4A with attachments as above, but without camera stand . . . \$105.00
Extra Lens Board 9 x 9 . . . 1.75

*All Century Cameras and Outfits will be equipped with Film Holders unless otherwise specified.

Sliding Ground Glass Carriage

(For Double Film or Plate Holders)

8 x 10 For Century No. 4A or 10A Camera with one 8 x 10 Eastman Film or Plate Holder . . . \$35.00
11 x 14 For Century No. 8A Camera with one 11 x 14 Sterling Film or Plate Holder . . . \$50.00

Reversible Adapter Backs

(For Studio Cameras)

This adapter fits the sliding carriage of Century Studio Cameras and includes the ground glass back and one Film or Plate Holder.

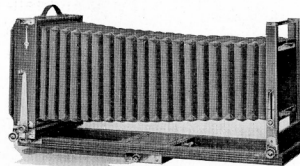
Camera Size	Holder Size	Price	Camera Size	Holder Size	Price
8 x 10	5 x 7	\$16.00	11 x 14	8 x 10	\$22.00
8 x 10	6½ x 8½	17.00	11 x 14	11 x 14*	26.00
8 x 10	8 x 10	18.00	*With Sterling Film or Plate Holder.		

*Film Holders will be supplied unless otherwise specified.

Eastman View Camera No. 2D

5 x 7 8 x 10

THE Eastman View is an unusually strong and durable camera, well reinforced, easily operated and made to stand hard work. Both models have ample rising and falling fronts, reversible backs, horizontal and vertical swings, double extension beds and front and back focusing adjustments easily operated by rack and pinion.



The back may be racked as close to the front as desired for wide angle lenses and the sliding tripod block moved to the point desired to balance the weight of the camera. Horizontal and vertical cut-out boards permit

one to make one, two or four exposures on the film or plate. The bellows is made of red morocco leather with automatic spring to prevent sagging. The adjusting nuts are on the right side and binding nuts on the left. The back bed extension is removable while the front extension is hinged and the two are held together by clamps and a heavy screw which give great rigidity.

The camera is flat finished, dark mahogany with dull metal trimmings. Extensions are of cherry for its greater strength. A strong black fibre case is furnished to accommodate the camera, six film or plate holders, tripod and focusing cloth.

	5 x 7	8 x 10
Bellows draw	23 in.	29½ in.
Weight	7 lb.	11¼ lb.
Lens board	4½ x 4½ in.	6 x 6 in.
Size closed	11¾ x 9¾ x 5¾"	14¾ x 13 x 5¾"

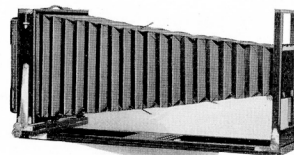
PRICES

Eastman View Camera No. 2D with Carrying Case and one	5 x 7	8 x 10
Eastman Film or Plate Holder*	\$60.00	\$70.00
Extra Fibre Carrying Case	11.00	12.00
Extra Lens Boards	.90	1.10
Extra Eastman Film or Plate Holders*	2.75	3.50

*Film Holders will be supplied with Eastman View Cameras unless otherwise specified.

NOTE—The letter "D" indicates the new dark finish. In ordering parts for light-finished outfits, omit the letter, "D" and order only by number.

Eastman View Camera 11 x 14



THIS camera is almost identical with the Eastman View No. 2 with the exception of the sliding tripod block. This is not furnished on the 11 x 14. It has ample vertical and horizontal swings, rising and falling front, a 37-inch bellows

draw and 5¾ x 5¾-inch lens board. The camera back may be racked as far forward as desired for extreme wide angle work. The dimensions of camera when closed are 19⅞ x 17½ x 5⅞ and the weight is 14 pounds.

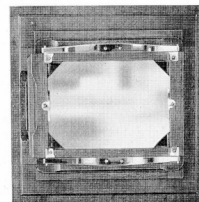
PRICE

Eastman View Camera, with black fibre Carrying Case and one Sterling Film or Plate Holder*	\$125.00
--	----------

*Film Holders will be supplied with Eastman View Cameras unless otherwise specified.

Reducing Back for Eastman View Cameras

FOR taking smaller film and plate holders than are accommodated by the regular camera backs. It is furnished to fit 8 x 10 cameras. Each back includes one Eastman Film or Plate Holder. In ordering Reducing Backs for Eastman View Cameras No. 2, please state whether the old light finish or the new dark finish is desired.



Reducing Back for Eastman View Cameras, with one Eastman Film or Plate Holder.*

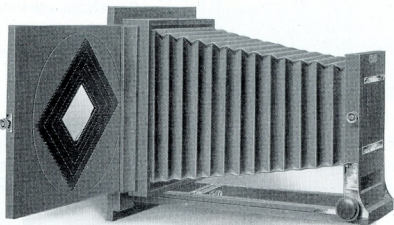
Size of Camera	Size of Holder	Price
8 x 10	5 x 7	\$16.00

Sizes not listed will be supplied on special order.

*Film Holders will be supplied unless otherwise specified. Please state whether light or dark finish is wanted.

Revolving Back Enlarging Camera

SIZE 8 x 10



AVERY practical enlarging camera with revolving negative carrier, and rising and falling front which makes it easy to adjust the image on the paper easel. A rack and pinion with large knob simplifies focusing. The carrier is fitted with nested kits down to $3\frac{1}{4} \times 4\frac{1}{4}$, the front board is $5\frac{1}{2} \times 5\frac{1}{2}$ inches and the bellows draw, 22 inches.

A convenient method of using this camera is as follows: Cut an opening in the darkroom partition and attach the camera to the partition so its back will cover the opening. Any suitable light is placed outside the darkroom and the enlargement projected upon a movable easel inside the darkroom. Enlargements may be made of any size within the capacity of the easel.

PRICES

Revolving Back Enlarging Camera, 8 x 10, without lens, including revolving back negative carrier with $6\frac{1}{2} \times 8\frac{1}{2}$, 5 x 7, 4 x 5, $3\frac{1}{4} \times 4\frac{1}{4}$ spring-finger kits, and one sheet of flashed opal glass	\$55.00
Extra Lens Board, $5\frac{1}{2} \times 5\frac{1}{2}$80

Eastman Clinical Camera Outfit

SIZE 5 x 7

THE use of photography as a means of clinical record has led to the development of the Eastman Clinical Camera, by the use of which the doctor, surgeon or pathologist may make picture records so simple of interpretation as to need but very little explanation.

This camera allows the fullest utilization of photography with the minimum of experience and effort.

A provision is made for photographing to a definite scale by setting the camera to a point on the scale on the camera bed and moving the camera on its tripod back and forth until the subject is in focus. When a second picture is to be made of the same subject the camera is set to the same scale, and a series of pictures made in this way over a period of time is more valuable for purposes of comparison.

A Lantern Slide Back is furnished with which lantern slides may be made from negatives made with the Clinical Camera or from radiographs.

The Enlarging Back also permits of enlarging from 5 x 7 negatives. An enlarging easel however is not furnished.

PRICES

Eastman Clinical Camera Outfit including 5 x 7 Clinical Camera, Kodak Anastigmat lens *f*.7.7, 8-inch focus, in No. 2 Kodamatic Shutter; one double 5 x 7 Eastman Film or Plate Holder; one Lantern Slide Back, one Enlarging Back with Illuminator, Compact Stand with tilting top and two Kodalites described on page 35

PARTS SUPPLIED SEPARATELY
 5 x 7 Camera only without lens \$70.00
 Kodak Anastigmat Lens *f*.7.7, 8-inch focus fitted to No. 2 Kodamatic Shutter 37.50

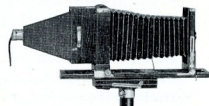


CAMERA READY FOR LANTERN SLIDE MAKING

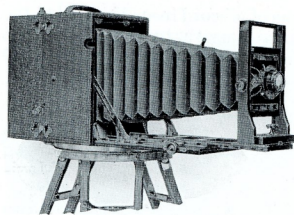
Folmer Compact Stand	\$20.00
Lantern Slide Back	14.00
Enlarging Back	14.00
Kodalite	22.00
Extra lens board, $4\frac{1}{4} \times 4\frac{1}{4}$50



CAMERA READY FOR ENLARGING



The Cirkut Camera No. 10



THE Cirkut is a revolving panoramic camera which offers the widest possible opportunities to the specialist in group or view photography. Its usefulness begins exactly where the ordinary view camera leaves off and continues beyond the range of any other panoramic camera.

The No. 10 Cirkut makes negatives 6, 8, or 10 inches in

width and takes film rolls from 4 to 20 feet in length, allowing for several exposures on a roll. If a group or landscape crowds an 8x10 negative, the Cirkut will make it 8x12 or 8x16 or 8x24 or almost any greater length desired.

It is fitted with an *f*.6.8 convertible lens of 10½-inch focus, the front and rear elements having foci of 24 and 18 inches respectively. This permits the operator to choose from three sizes of images, depending upon the lens elements used.

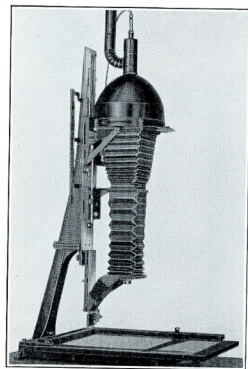
A scale on the tripod head indicates the length of negative necessary to include all of a group or landscape. A release starts and stops the exposure, an indicator shows how much film has been used and a punch perforates between exposures so that they may be cut apart for developing. A governor controls the speeds which range from ½ to ¼ second for any portion of the negative. The rising and falling front board also swings and a ground glass is supplied for focusing.

PRICE

No. 10 Cirkut Camera taking 6, 8 or 10-inch film, size 9 x 11 x 12 inches, weight 49 lbs., 27-inch bellows draw, 4 x 4-inch lens board, Turner-Reich Convertible Anastigmat Lens Series II in Double Valve Shutter and items listed in Note (*) \$405.00
 Film for Cirkut Cameras, see page 59.

*NOTE—With this camera are included Cirkut gears for regulating speed, Cirkut Tripod head and Professional Tripod legs. Two carrying cases are furnished. The Cirkut Tripod head will also fit the 12-foot tripod.

Eastman Auto-Focus Enlarger and Reducing Attachment



THE Eastman Auto-Focus Enlarger offers the advantages of projection printing in an outfit that sells at an exceptionally attractive price. It takes negatives 5 x 7 inches and smaller, enlarging from 1½ to 4 diameters. Maximum print size is 20 x 28 inches.

The camera is counterbalanced on an upright track and an ingenious cam on the standard maintains accurate focus at all times. The camera moves easily up or down to change the image size—the turn of a lever locks it in place.

The negative holder accommodates film or plate negatives 5 x 7 or smaller and four masking slides are readily adjusted to mask

out any portion of the image. The paper holder has movable masking arms for prints up to 17 x 20 inches and a margin gauge is adjustable for white margins from ¼ to 2½ inches.

The lens is the Kodak Anastigmat *f*.4.5, 7½-inch focal length, and the 250-watt Projection Mazda Lamp, two of which are furnished, is in a thoroughly ventilated lamp house. A foot switch controls the light while the enlarger will stand on a bench or table of as small dimensions as 26 x 30 inches. Overall height of machine extended is 69 inches; width, 29 inches; depth, 29 inches.

The Reducing Attachment is an extra bellows and support, quickly attached, for making prints from negative size to a 2¾ times reduction—prints as small as 1¾ x 2½ from a 5 x 7 negative.

PRICES

Eastman Auto-Focus Enlarger, complete, including 5 x 7 camera with Kodak <i>f</i> .4.5 Anastigmat lens, two 250-watt lamps, paper holder, foot switch and electric cord (without Reducing Attachment)	\$175.00
4 x 5 Adapter for Eastman Auto-Focus Enlarger	4.50
Eastman Auto-Focus Enlarger Reducing Attachment	30.00
Eastman Diffusing Discs, set of three	25.00
Supplied separately, each	10.00
Extra 250-watt, Type C Mazda Lamps, each	3.00

Eastman Projection Printer No. 2

SIZE 8 x 10

THE Eastman Projection Printer is so well known that a detailed description of its operation is no longer necessary. The projected image is always in focus and it is only necessary to raise or lower the camera to change the image size. The camera is fitted with the Kodak Anastigmat Lens *f*.4.5 and when softness is desired this is secured with Diffusing Discs which are supplied. An adjustable masking device permits one to quickly mask out any portion of the negative.

The sliding printing table is furnished for very large prints and an adjustable paper holder for smaller prints. This holder is fitted with movable masking arms which also hold the paper flat during the exposure. An adjustable guide may be set for white margins from $\frac{1}{4}$ to $2\frac{1}{2}$ inches. The printer occupies a floor space of 3 feet by 4 feet 8 inches.

The No. 2 Printer is for negatives 8 x 10 or smaller and will make prints up to 40 x 50 inches—from 1 to 5 diameters. It is fitted with the Kodak Anastigmat Lens *f*.4.5, 10-inch focus and three Diffusing Discs. The paper holder will mask prints from 3 x 3 to 17 x 20 inches. With the camera raised for a 5 diameter enlargement the extreme height is 10 feet, 4 inches.

PRICES

Eastman Projection Printer No. 2 complete including 8 x 10 camera with Kodak Anastigmat Lens, <i>f</i> .4.5, set of three Diffusing Discs, paper holder, sliding table, 10-watt ruby bulb and two 400-watt Mazda lamps	\$675.00
Reducing Attachment, including a highly efficient <i>f</i> .7.9 lens	67.50
Extra 400-watt lamps, each	4.50
Extra 10-watt lamp, ruby glass60



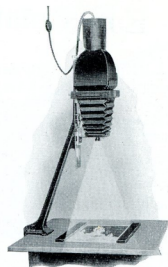
Kodak Auto-Focus Enlarger

THE Kodak Auto-Focus Enlarger places the most convenient of all enlarging devices within the means of every photo finisher. The camera, on a vertical track, is raised or lowered to change the size of the image which is always in focus. It takes film or plate negatives 4 x 6 or smaller, enlarging from $1\frac{1}{2}$ to $3\frac{1}{2}$ diameters, the largest print being 14 x 21 inches. Clamps on an ordinary table top where the bromide paper is held flat by quickly adjusted paper holders.

The lamp house accommodates a 75-, 100-, 150- or 200-watt Mazda C lamp (lamp not furnished); the lens is the Kodak Anastigmat and a Diffusing Disc is supplied separately for soft focus effects.

PRICES

Kodak Auto-Focus Enlarger with Kodak Anastigmat lens, electric cord and plug, set of six flexible metal masks and paper holders	\$33.00
Diffusing Disc	1.00

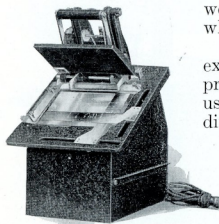


Kodak Service Printer

THIS printer is fitted with all the conveniences essential for commercial amateur finishing. It accommodates negatives up to 5 x 7 inches singly or in the film strip, has eight masks of fixed size as well as adjustable masks and guides for white margins from $\frac{1}{8}$ to $\frac{1}{2}$ inch.

One movement of the platen makes the exposure and numbers and counts the print. A 75-, 100- or 150-watt lamp may be used. Ground and sand blasted glasses for diffusion and a pilot light are supplied.

Brackets on either side of the printer permit its adjustment in the work table to the most convenient angle. All-metal construction assures positive action and long life.



PRICE

Kodak Service Printer for 110-volt circuit complete except for printing lamp	\$80.00
--	---------

NOTE—The printer is supplied wired for 110 volts. If it is to be used on 220-volt circuits, the voltage should be specified when ordering.

Eastman Professional Printer

MODEL 2

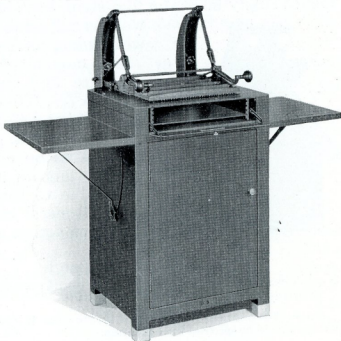
THE Eastman Professional Printer, operating on principles entirely new to printing devices, is a very efficient piece of workroom equipment. Its most distinctive feature is the single, concentrated light source. The light from a powerful lamp travels in almost parallel lines, giving greater printing speed and image sharpness. The lamphouse is located in the bottom of the machine. Three lamp sockets on a movable fixture are so arranged that any one of three lamps may be moved into position in front of a reflector which projects this light to a mirror, set at a 45-degree angle, and from this mirror to the printing surface.

The easily operated platen is made of two heavy pieces of red cellulose acetate, attached to metal plates. This platen is transparent and is rubberstudded to make positive contact. When the platen makes the contact with the negative, the reflecting mirror is automatically thrown into position and a mercury-tube switch lights the lamp, making the exposure. A mogul-base socket carries a 1000-watt lamp while the two remaining sockets may carry 25-, 250- or 500-watt lamps. This obviates the use of a rheostat and enables one to change the light to suit the speed of the paper one is using. Beneath the reflecting mirror is a 40-watt pilot lamp covered with a sheet of amber glass. This light is used for arranging dodging material or vignettes.

Four inches below the printing top is a second sheet of plate glass on which one may place vignettes or dodging tissue or work with a wax pencil. Five grooves on either side allow a glass with this material to be placed closer to the negative. A knob on the left of the machine drops a piece of ground glass between the light and the negative and moves it up or down for proper diffusion in making vignettes. When the platen is in contact, a cardboard vignetter may be moved about beneath the negative and the effect plainly seen through the transparent platen. While similar in appearance to the original Professional Printer, the cabinet of the Model 2 is made entirely of steel, enameled a rich olive brown. Every printer is carefully inspected at the factory and checked for contact and evenness of illumination. The printing surface covered is 12 x 15 inches.

PRICE

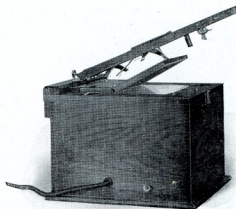
Eastman Professional Printer Model 2 without lamps	\$200.00
1000-watt Mazda C, T-20, 115-volt pre-focus base lamp	\$7.50
Do. 500-watt	4.85
Do. 250-watt	3.75
Do. 25-watt	1.00



20

No. 1 Eastman Printer

AN ideal professional printer for 5 x 7 or smaller negatives with an 8 x 8-inch printing glass surface. The hand lever automatically locks as it brings the paper in contact with the negative, and switches on the two printing lamps. These lamps may be adjusted from the outside as to position and the light is diffused by a ground glass supplied for this purpose. A ruby lamp is furnished but the printing lamps, which should be 60-watt lamps, are not supplied.



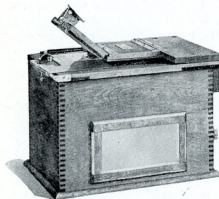
The printer is well made throughout, stained brown with metal parts nicked. The outside dimensions are 10½ x 14 x 14 inches.

PRICE

No. 1 Eastman Printer including ruby bulb, electric cord and plug . . . \$20.00

Kodak Amateur Printer

WITH the Kodak Amateur Printer, prints with white margins may be made in any size from 1½ x 2½ to 4 x 5½ inches. The simple masking device is quickly set for any size film negative or for masking out any part of the negative.



The box contains a red electric bulb for adjusting the negative and mask, and a socket for a 60-watt Mazda lamp which is automatically lighted when the hinged top brings the paper in contact with the negative.

A removable side window covered with orange fabric serves as a darkroom lamp. The Printer's dimensions are 11¼ x 7¾ x 9¼ inches.

PRICE

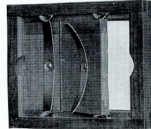
Kodak Amateur Printer, including ruby bulb, 5½ feet of electric cord and plug, but without white light bulb . . . \$10.00

Eastman Heavy Weight Printing Frames

CONSTRUCTED of seasoned hardwood with strong springs of tempered steel. The backs of sizes up to and including 8 x 10 open two thirds and have a piano hinge while larger sizes open half and have butt-hinges.

Eastman Heavy Weight Printing Frame:

5 x 7 . . .	\$2.00	7 x 17 . . .	\$ 7.00
8 x 10 . . .	2.50	12 x 20 . . .	9.50
11 x 14 . . .	5.25	16 x 20 . . .	10.00
14 x 17 . . .	7.25	20 x 24 . . .	12.00

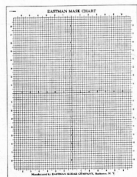


21

Cirkut Printing Frame

MADE in five sizes from 2½ to 10 feet in length and for 6½, 10 and 16 inch widths of Cirkut film. Cirkut Printing Frame:

6½" x 30". \$ 8.50
 6½" x 48". 10.00
 10" x 6'. \$20.00
 16" x 6'. \$35.00
 16" x 10'. 49.00



Eastman Mask Charts

FOR producing printing masks with rectangular openings. Made of non-actinic paper, accurately ruled in quarter-inch spaces and marked in inches both ways from the center. The chart is placed over the mask paper and both chart and masking blank cut with a sharp knife to the desired size. The chart may be used as a mask when only one of a size is desired.

Eastman Mask Charts, per doz. \$0.15 \$0.25 \$0.45

5 x 7 8 x 10 11 x 14

Kodaloid Printing Masks

NON-ACTINIC, yet fully transparent, these flexible masks allow the printer to see exactly what he is doing. Supplied, as ordered, with or without perforated trimming guide for locating prints with narrow white margins. Please order by number.

Kodaloid Printing Masks, each, with or without trimming guide:*

No.	Outside Dimensions	Size of Opening	For Negatives	Price	No.	Outside Dimensions	Size of Opening	For Negatives	Price
1	4x5	1½x2½	1½x2½ Films	\$0.10	8	5x7	3½x5½	3½x5½ Films	\$0.15
2	4x5	2½x3½	2½x3½ Films	.10	9	5x7	3½x4½	4x5 Films or Plates	.15
3	4x5	2½x4½	2½x4½ Films	.10	11	5x7	4½x5½	3½x5½ Film Packs	.15
4	4x5	2½x3½	3½x4½ Films	.10	12	5x7	3½x4½	4x5 Film Packs	.15
6	4x5	3½x4½	3½x4½ Plates	.10	13	6½x8½	4½x6½	5x7 Film Packs	.25
8C	5x7	2½x4½	2½x4½ Films	.15					

*In ordering please specify which style is wanted.

Kodaloid

KODALOID is a thin, flexible substance similar to film base, without the sensitive emulsion, and is provided in different thicknesses to meet various requirements. All except No. 5 are transparent. No. 5 which is non-actinic and extra heavy is used for masks. No. 1 may be used for protecting the emulsion side of a negative, from which a large number of prints are to be made, or for printing from wet negatives.

Kodaloid, per square foot:

No.	Approximate thickness	Price
1—Transparent, Thin	.002"	\$0.25
2—Transparent, Medium	.003½"	.25
3—Transparent, Heavy	.005½"	.30
5—Ruby or Orange, extra heavy, for masking	.008"	.35
6—Transparent, Extra Heavy	.008"	.35

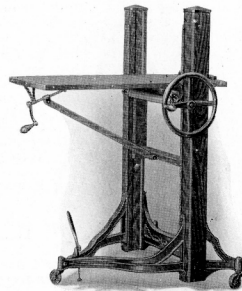
Century Semi-Centennial Stand

THE Semi-Centennial is an ideal Stand for studio cameras. Its bed may be elevated to a height of 49 inches or dropped to within 14 inches of the floor, an especial advantage in child portraiture. The platform may be tilted by an easily operated screw adjustment, raised and lowered by rack and pinion and the weight of the camera is balanced by heavy springs.

The wide-spreading triangular metal base is fitted with three noiseless casters and a jack. Floor space occupied, 29 x 33 inches. Finish—dark mahogany. Platform covered with brown felt.

PRICES

Century Semi-Centennial Stand No. 1A with platform, 30 x 17 inches, for 8 x 10 cameras. \$60.00
 No. 2A with platform 37 x 17 inches, for 11 x 14 cameras. \$65.00
 Extra Casters, each 1.00

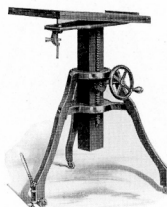


No. 4A Century Studio Stand

THIS stand is very simple, strong and durable. It is raised and lowered by a positive self-locking spiral device. The stand rests upon three felt casters, and is equipped with Century Camera Jack operated by the foot. The top is covered with felt and is fitted with the Century Automatic Tilting Device. Made of hardwood, dark mahogany stained; metal parts enameled.

PRICES

Century Studio Stand No. 4A \$45.00
 Extra Casters for replacement, each 1.00

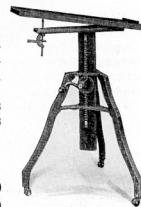


No. 3A Century Studio Stand

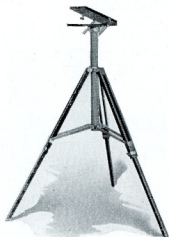
MADE of hardwood with cherry finish, and black enameled metal parts. The stand is raised and lowered by a self-locking spiral. The top is covered with felt and provided with a simple tilting device exceedingly easy to operate. When the camera is to be tilted forward the rear of the top is simply lifted to the desired point, where it locks and remains in position until released by a slight pressure of the thumb.

PRICES

Century Studio Stand No. 3A \$35.00
 Extra Casters for replacement, each 1.00



Folmer Compact Stand

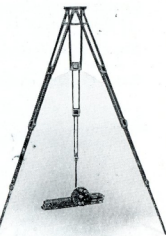


FOR commercial work or home portraiture this stand will immediately appeal to the photographer who appreciates good equipment. It is strong, rigid and extremely light in weight. It may be raised to 53 inches or dropped to 26½ inches from the floor. The center post is a hollow brass tube sliding in aluminum castings while metal braces firmly hold the legs. The felt covered revolving top is 6¾ x 9½ inches and may be tilted and locked at any angle up to 90 degrees, at which point it may be used for vertical pictures. Its metal parts are sand blasted and finished in bronze, the woodwork in mahogany. The weight complete is six pounds and twelve ounces.

Folmer Compact Stand \$20.00

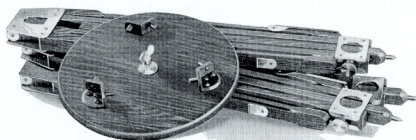
Crown Tripod

A RIGID four-section tripod, made of selected cherry. The two lower sections telescope into the third upon which the upper section folds back. Binding screws are non-detachable. Expansion brackets in the upper section and taper pins prevent side play. An extra tripod socket in top, set off center, is useful for counter-balancing the weight when a long bellows extension is employed.



Crown Tripod	Length		Weight	Diameter of top	Price
	Closed	Extended			
No. 1	16¼ in.	4½ ft.	36 oz.	4 in.	\$10.00
No. 2	17¼ in.	4½ ft.	65 oz.	6 in.	11.00
No. 4	20 in.	5½ ft.	90 oz.	6½ in.	13.50
Extra Crown Head Screws, each60

Professional Tripod



THIS tripod follows closely the construction of the Crown Tripod except that it is made in three sections, the lower one of which telescopes into the center. It offers a strong and rigid support for cameras up to and including 14 x 17 and will be found very durable.

Length closed, 24½ inches; extended, 5 feet; weight, 11¼ pounds; diameter of top, 11½ inches \$22.00

Extra Professional Tripod Head Screws60

Eastman Tripod Brace

CONSISTS of three adjustable brass arms joined at the center. Clamps at the outer ends grasp the tripod legs and prevent collapse of the tripod when lifted for moving from place to place.

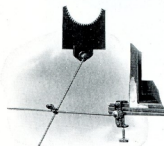
Eastman Tripod Brace \$1.50



Eastman Vignetter

IT consists of two extension arms—15 inches in length—adjustable to any desired position. One of these arms holds the vignetter card; the other clamps to the camera bed. It may be attached in an instant to any portrait or view camera. The vignetting card measures 5½ inches in width by 4 inches high, and is black on one side and gray on the reverse. The finish is white nickel.

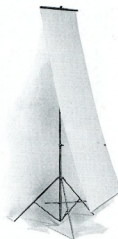
Eastman Vignetter \$2.00



Eastman Home Portrait Reflector

AN indispensable accessory in home portraiture. The reflector is 4 feet 11 inches x 24¾ inches in size and is made of white opaque cloth which reflects the maximum amount of light. It is mounted and hung on a metal stand—70 inches high when extended—26 inches in length when folded. An adjustable rod at the foot holds the reflector at different angles. A cloth carrying bag is provided. Weight, 4½ pounds.

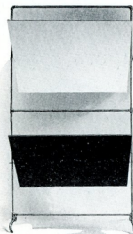
Eastman Home Portrait Reflector, with carrying bag \$12.00



Eastman Studio Reflector

CONSISTS of two rectangular, opaque screens each 41 x 35 inches, mounted one above the other in a strong, iron frame. These screens are black on one side and white on the other, and can be swung to any angle and securely locked. Floor standards prevent swaying and casters facilitate moving the reflector about the studio. It stands 6 feet 7 inches high.

Eastman Studio Reflector \$30.00



Eastman Adjustable Lens Hood

AN efficient light shield. By means of a spring clasp and cord it may be instantly attached to a portrait lens barrel. It is covered with a fine grade of fabricated leather and lined with velvet.



Eastman Adjustable Lens Hood:

No. 0, for lens barrels from 2½ to 3½ inches in diameter	\$4.00
No. 1, for lens barrels from 3½ to 4½ inches in diameter	5.00
No. 2, for lens barrels from 4½ to 6 inches in diameter	6.00

Camera Bulbs and Tubing

MADE of the best quality, pure rubber, lasting and serviceable. Bulbs and tubing are supplied in several sizes and lengths. No. 1 is for small folding cameras, No. 2 for larger folding cameras, No. 3 for Special Kodaks and Premos, No. 4 for long focus cameras. Nos. 5 and 6 are for professional cameras. Bulbs No. 5 and No. 6 and red, white and black tubing are also sold separately.

Bulbs and Tubing:

No. 1 Black Bulb and 6 inches of black tubing	\$0.20
No. 2 Black Bulb and 6 inches of black tubing25
No. 3 Black Bulb and 12 inches of black tubing35
No. 4 Red Bulb and 18 inches of red tubing40
No. 5 Large White Bulb and 36 inches of white tubing50
Bulb only: No. 5 White35
Bulb only: No. 6 (Professional) Red75
Tubing only, per foot: Regular size: Red or black11
Regular size: White10
½-inch White35

Eastman "Four-in-One" Groupers

FOR posing groups in the studio these groupers are indispensable. When not in use they nest together in a floor space 12¼ x 12¼ inches. The largest is 24 inches tall, the others respectively 20, 16 and 12. Made of solid oak, properly finished, they are both substantial and good looking.



THE GROUPERS SEPARATED

Eastman "Four-in-One" Groupers, per set of four \$15.00

Kodak Anastigmat Lens

WITH its staff of optical mathematicians, laboratory, lens grinding plant, experienced workmen, and lens testing equipment unexcelled as an instrument of precision, the Kodak Company has again proved that America can equal the world in the production of instruments of scientific exactness.



Kodak Anastigmats are Eastman made in every sense from the formula of the mathematician to the final test which does not permit the slightest error to pass. They have very fine definition and flatness of field and are so perfectly corrected that the point of accurate focus is very easily determined.

Kodak Anastigmat f/4.5

PRICES

	Size of Film or Plate covered at f/4.5	Equivalent Focus in inches	Lens in barrel with Iris Diaphragm	Lens in Compound Shutter
No. 30	2¼ x 3¼	4¾	\$ 31.00	\$ 48.75
No. 31	3¼ x 4¼	5½	35.25	53.00
No. 32	4 x 5	6¾	41.00	60.50
No. 33	5 x 7	7½	50.00	70.00
No. 34	5 x 8	8½	62.50	85.75
No. 35	6½ x 8½	10	108.00	140.75
No. 36	8 x 10	12	150.00	187.50

Eastman Portrait Diffusion Disks and Holders



THESE Disks permit one to make diffused or soft focus negatives with sharp focus lenses. The Disk is placed in a holder in front of the lens, no increase in exposure being necessary. Two Disks are supplied, the A for very slight diffusion, the B for moderate diffusion. In both cases the result is a pleasing softness. The Disks are furnished in three sizes: No. 0, 2½ inches; No. 1, 3½ inches; No. 2, 4½ inches in diameter.

Adjustable Disk Holders are made in three sizes to hold the three sizes of Disks on various sized lenses. The No. 0 Holder is adjustable to lens barrels from 2 to 3¼ inches in diameter; the No. 1, 3 to 4½ inches; the No. 2, 4½ to 5½ inches.

PRICES

	No. 0	No. 1	No. 2
Eastman Portrait Diffusion Disk, A or B	\$5.00	\$6.00	\$7.50
Eastman Adjustable Diffusion Disk Holder	3.00	4.00	5.00

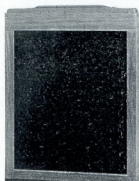
Eastman Diffusing Discs

THESE Discs are for producing soft focus results in enlarging from sharp negatives. They are the Discs supplied for use with the Eastman and Kodak Projection Printers and Eastman Auto-Focus Enlarger.

PRICES

Eastman Diffusing Discs for Eastman Auto-Focus Enlarger, 2 inches in diameter. Set of three	\$25.00
Supplied separately, each	10.00
Eastman Diffusing Discs for No. 2 Projection Printer, 2 $\frac{5}{8}$ inches in diameter. Set of three	30.00
Supplied separately, each	12.00
Specify, slight, medium or strong diffusion.	
Eastman Diffusing Discs for Kodak Projection Printer, 1 $\frac{1}{4}$ -inch. Set of two	10.00

Eastman Film Holder



THIS is a substantially constructed holder with a very efficient light trap. The end section of the holder frame is hinged so that it may be turned back when the slide is partly withdrawn. The film slides into metal grooves which cause it to lie perfectly flat and when the hinged end is closed the film is held at each end. Inserting the slide locks the holder.

The holders are made of hardwood with all joints dovetailed. They fit Century Cameras, Century Studio Reversible Backs, and Eastman View Cameras. The Eastman Film Holder is furnished in sizes listed below. The 5 x 7 and 8 x 10 sizes have an improved, metal light trap support and hard rubber slides.

*4 $\frac{1}{4}$ x 6 $\frac{1}{2}$	*4 $\frac{3}{4}$ x 6 $\frac{1}{2}$	5 x 7	6 $\frac{1}{2}$ x 8 $\frac{1}{2}$	8 x 10	7 x 11
\$2.50	\$2.50	\$2.75	\$2.75	\$3.50	\$3.00

*Outside measurements same as 5 x 7.

Sterling Film Holder

THIS double holder fits the F. & S. Commercial, 11 x 14 Eastman View Camera and any other camera taking 8 x 10 or 11 x 14 Sterling Plate Holders.

Sterling Film Holder	8 x 10	\$5.50	11 x 14	\$10.50
--------------------------------	------------------	--------	-------------------	---------

Eastman Film Sheath No. 3

FOR using Eastman Professional Film in any model of View Plate Holder. The films are easily placed in the sheath and held without buckling.

Eastman Film Sheath No. 3	4 $\frac{1}{4}$ x 6 $\frac{1}{2}$	5 x 7	6 $\frac{1}{2}$ x 8 $\frac{1}{2}$	8 x 10
	\$0.20	\$0.20	\$0.25	\$0.30
	28			

Eastman Plate Holder

LIGHT proof, strongly made, the construction being practically the same as in Eastman Film Holders except that they are slightly heavier because of the greater thickness of plates. The 5 x 7 and 8 x 10 sizes have an improved, metal light trap support and hard rubber slides.

Eastman Plate Holder	5 x 7	6 $\frac{1}{2}$ x 8 $\frac{1}{2}$	8 x 10	7 x 11
	\$2.75	\$2.75	\$3.50	\$3.00

Sterling Plate Holder

A STRONG and durable, double plate holder. Fitted with sliding locks that hold the plate securely. A spring insures absolute register of the plate. Fitted with slides that will not warp or crack.

Sterling Plate Holder	8 x 10	11 x 14
	\$5.50	\$10.50

View Plate Holder Kits

MADE of seasoned material that will not warp, finished in dead black, and of correct size to nest perfectly.

Size	Size of Opening for Plates	
4 x 5	3 $\frac{1}{4}$ x 4 and 3 $\frac{1}{4}$ x 4 $\frac{1}{4}$	\$0.35
5 x 7	3 $\frac{1}{4}$ x 4, 3 $\frac{1}{4}$ x 4 $\frac{1}{4}$, 3 $\frac{1}{4}$ x 5 $\frac{1}{2}$, 4 x 5 and 4 $\frac{1}{4}$ x 6 $\frac{1}{2}$.40
6 $\frac{1}{2}$ x 8 $\frac{1}{2}$	3 $\frac{1}{4}$ x 4 $\frac{1}{4}$ and 5 x 750
7 x 11	5 x 760
8 x 10	5 x 7 and 6 $\frac{1}{2}$ x 8 $\frac{1}{2}$60
11 x 14	6 $\frac{1}{2}$ x 8 $\frac{1}{2}$80

Film and Plate Holder Slides

ALL the slides listed below will be found extremely serviceable. They are made of tough, hard materials, and they slide easily.

Film and Plate Holder Slides.	3 $\frac{1}{4}$ x4 $\frac{1}{4}$ x5 $\frac{1}{2}$	4x5	5x7	6 $\frac{1}{2}$ x8 $\frac{1}{2}$	8x10	7x11	11x14
	\$0.45	\$0.50	\$0.50	\$0.60	\$0.80	\$1.00	\$1.00

Eastman Professional Focusing Cloth

MADE of extra heavy cloth, 1 $\frac{1}{4}$ x 1 yard in area, with bound edges. Eastman Professional Focusing Cloth \$1.50

Eastman Home Portrait Focusing Cloth

A SILK finish fabric with bound edges. Measures 40 x 48 inches. Eastman Home Portrait Focusing Cloth \$1.75

Rubber Focusing Cloth

FIRST quality of rubberized cloth. Medium weight. One yard square. Rubber Focusing Cloth \$1.00

Camera Bellows

For Eastman View Camera, No. 2

5 x 7	\$10.00
8 x 10	13.00
11 x 14	18.00

Wratten Filters

WRATTEN Filters, for use with Orthochromatic and Panchromatic films and plates, are supplied in three forms: Gelatin Film, "B" glass cemented filters (a good optical glass) and "A" glass cemented filters, commonly called "Flats" (hand surfaced optically flat glass). Unless otherwise specified, "B" filters are supplied for photographic use.

The filters most commonly used are:

K1, a light yellow filter giving good correction for short exposures.

K2, a stronger yellow filter and the one most generally used.

K3, the filter that gives the correct rendering of all colors on Panchromatic films or plates. This filter is not recommended for other films or plates.

G, a strong yellow filter for photographing dark yellow woods, badly stained copies or for eliminating haze in distant landscapes.

F, a deep red filter for photographing dark mahogany, blue prints, etc.

Tricolor: A, orange-red; B, green; C, blue.

A, is for photographing mahogany, rosewood and similar articles.

B, is for photographing typewriting, figured rugs, carpets, etc.

C, is for three color work only.

Commercial Set of 8 Filters

THIS set includes the filters most generally used: K1, K2, K3, G, F, A, B and C. The exposure factors for all of these filters are given in every package of Panchromatic Films or Plates.

Cemented in "B" glass, 3 inch, per set in case	\$35.00
Single Filters, each	3.75

Wratten Tricolor Filters

SUPPLIED in Gelatin Film, or cemented in "B" glass or "A" glass. For comparison, the prices of only one size are given. Prices of other sizes approximately in proportion. Full list on request.

Per set 3-inch square	3 color	4 color
Gelatin Film	\$ 2.25	\$ 3.00
In "B" Glass	12.50	16.25
In "A" Glass	76.50	102.00

NOTE—The prices in "B" Glass include the cost of matching but do not include the case, the price of which is \$4.00.

Single Wratten Filters

Inch	Gelatin Film	Unmounted	Unmounted	Mounted Circles
		Circles in B Glass	Squares in B Glass	in Metal Cell in B Glass
$\frac{3}{4}$	\$1.15	\$1.15	\$2.40
1	\$0.20	1.30	1.30	2.55
$1\frac{1}{8}$	2.85
$1\frac{1}{4}$	2.85
$1\frac{1}{2}$.20	1.45	1.45	2.85
$1\frac{3}{8}$	3.15
$1\frac{3}{4}$	3.15
$1\frac{7}{8}$.25	1.65	1.65	3.15
$1\frac{7}{4}$	3.30
$1\frac{7}{8}$	1.75	3.30
$1\frac{7}{4}$	3.45
$1\frac{3}{4}$.30	1.90	1.90	3.45
.....	2.10	4.20
$1\frac{7}{8}$	4.20
2	.40	2.10	2.10	4.20
$2\frac{1}{8}$.45	2.25	2.25	4.50
$2\frac{1}{4}$.50	6.00
$2\frac{3}{8}$	6.00
$2\frac{3}{4}$	2.85	6.00
$2\frac{3}{8}$.65	2.85	2.85	6.00
$2\frac{3}{4}$	7.50
$2\frac{3}{8}$.75	7.50
$2\frac{3}{4}$	3.75	3.75	7.50
$2\frac{3}{8}$	3.75	7.50
3	.90	3.75	3.75	7.50
$3\frac{1}{4}$	1.05	4.75
$3\frac{1}{2}$	1.25	5.65	5.65
4	1.60	6.75	6.75	13.50
$4\frac{1}{2}$	2.05	9.40
5	2.50	9.40

NOTE—Where no prices are quoted on Unmounted Circles or Squares in B Glass, the cost will be figured at an increase of 50 per cent over the next larger listed size. Special sizes are not returnable for credit.

Wratten M Filters

THESE filters are for use in microscopy and the method of using them is described in the booklet "Photomicrography" (see following page).

SET OF 9 FILTERS

Gelatin Film 2 inches square	\$ 2.50
Gelatin Film 3 inches square	3.75
Cemented in "C" Glass 2 inches square (in leather case)	16.00
Cemented in "C" Glass 3 inches square (in leather case)	30.00
Cemented in "C" Glass 4 inches square (in leather case)	42.00

A SET of special filters intended for visual work with the microscope. Their use is described in "Photomicrography" (see below).
 Set of 9 Filters, mounted in thin glass 33 mm. disks \$12.00

Wratten Experimental Film Filter Book

CONTAINS assortments of Gelatin Film Filters 2 x 3 inches.
 30 in book, 10 varieties each of blue, green and red \$ 9.00
 60 in book, all varieties 18.00

Eastman Adjustable Filter Holder

FOR use with the 2, 3 and 4-inch square Wratten Filters. By means of a simple automatically adjusting ring, the 4-inch filters may be securely attached to any lens barrel from 2 $\frac{3}{8}$ to 3 $\frac{3}{8}$ inches in diameter, the 3-inch filters to any lens barrel from 1 $\frac{1}{4}$ inches to 2 $\frac{3}{8}$ inches in diameter, and the 2-inch filters to lens barrels from 1 $\frac{1}{8}$ to 1 $\frac{1}{4}$ inches in diameter.

2 inches 3 inches 4 inches
 Square Square Square

Eastman Adjustable Filter Holder, for Wratten Filter. \$1.25 \$1.50 \$2.50

Eastman Filter Test Chart

CONTAINS 12 small viewing filters, mounted in cardboard, for examining the subject to determine what filter should be used.
 Eastman Filter Test Chart \$0.75

Books on Photography

"The Photography of Colored Objects"

LANDSCAPE, portraiture, the photography of colored objects for reproduction and rendering of color contrast. Bound in board \$0.50

"Photomicrography"

The optical and photographic side of Photomicrography, dealing especially with illumination. 36 pages \$0.15

"The Fundamentals of Photography"

An elementary account of the theoretical foundations of photography in language readily understood by the layman. Bound in board. \$1.00

"Elementary Photographic Chemistry"

A simple account of photographic chemistry for the practical photographer. Bound in board \$0.50

THESE safelights consist of one or two sheets of glass coated with gelatin film in colors which combine to give the greatest possible intensity of light consistent with safety when used as recommended.

Series 00. A clear yellow for use with Velox, Azo or similar papers.

Series 0A. A greenish yellow safelight for use with Bromide Paper and Lantern Slide Plates.

Series 1. A red safelight for use with Films and Plates which are not color-sensitive.

Series 2. A deeper red safelight for extra rapid and Orthochromatic Film or Plates which are sensitive to green, but not to red.

Series 3. A green safelight for use with the Panchromatic Film or Plate. Its faint illumination grows quite strong as the eyes become accustomed to it.

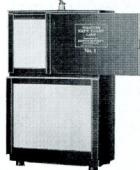
Wratten Safelight, Special (10 x 12 size only), for use only with indirect lighting for developing negative film.

	5 x 7	8 x 10	10 x 12
Wratten Safelights, any series	\$0.75	\$1.25	\$1.75

Special sizes supplied at an advance of 33 $\frac{1}{3}$ % above the price of next larger size from which they can be cut.

Wratten Safelight Lamps

Nos. 1 and 2



THESE lamps are so constructed that only reflected light passes through the safelight, assuring evenness of diffusion. The electric globe is in the top of the lamp and a curved reflector extends to the bottom.

The safelight glasses are 8 x 10 inches, affording ample illumination for the inspection of large negatives.

The upper half of the No. 1 Lamp is fitted with a sheet of opal glass for white light illumination, and is covered with a light-tight sliding shutter.

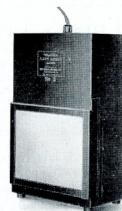
THE No. 2 Lamp illustrated at right is of the same height and similarly constructed, but it does not have the upper opal glass or slide.

These lamps include electric lamp attachment with 26-inch cord and plug and one safelight. The electric bulb, which should be 25 watts, is not supplied.

When no safelight is specified, the Series 2 will be supplied.

Wratten Safelight Lamp, including Safelight, No. 1	No. 2
cord and plug	\$10.00 \$8.00

Extra Safelight for Wratten Safelight Lamp, any series, each	1.25	1.25
--	------	------





Kodak Safelight Lamp

LIKE the Wratten Safelight Lamp this lamp has the upper light chamber so that only reflected rays strike the safelight. It is equipped with a 5 x 7 series 1 safelight for use with film or plates not highly color sensitive. Other safelights may be obtained. It is made of metal—includes electric fittings and 4½ feet of cord with plug, but not the 25-watt electric bulb.

Kodak Safelight Lamp, including one Safelight . \$3.50
Extra 5 x 7 Safelights, any series, each75

Eastman Safelight Lamp

THIS lamp may be attached either to a drop cord or a wall socket and is especially convenient where an overhead light is desired. The lamp takes a 5 x 7 Wratten Safelight, the series 2 being supplied unless otherwise specified. As the light is direct a 10-watt bulb (not supplied) should be used.

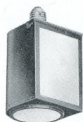
Eastman Safelight Lamp including one Safelight, screw plug and socket \$3.00
Extra 5 x 7 Safelights, any series75



Brownie Safelight Lamp

THIS lamp fits the standard electric socket, is made of metal, neatly japanned, and is only a trifle larger than the 10-watt Mazda bulb it holds. Has a circular, removable, safelight in end and larger, removable safelight in side, both series 1. Electric bulb not supplied.

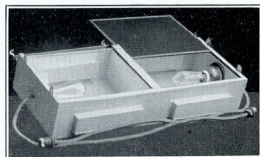
Brownie Safelight Lamp, including Safelights . . . \$1.75
Extra Safelights, each, Circular25
Do., Rectangular40



Indirect Light Boxes

THESE metal boxes are intended to be swung by chains from the ceiling. Single boxes use one 10 x 12 safelight or one white light; double boxes use one of each, or two different safelights, as desired. Cord and plug are included but not safelights or electric bulbs.

Indirect Light Box
without safelight, Single Double
bulb or chains . . . \$9.00 \$18.00
Wratten Safelight, any series,
10 x 12 1.75



DOUBLE INDIRECT LIGHT BOX, OPEN

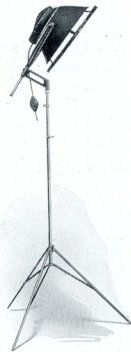
Kodalite

THE Kodalite is an illuminating unit with a multiplicity of uses. For commercial work in the studio or on the outside job, it furnishes that extra illumination that is often essential to a perfect result. In studio or home portraiture, it is equally efficient as an auxiliary light.

The novel feature of the Kodalite is its specially designed, silver-plated reflector which throws a powerful, 28 degree angle beam of light from a 500 watt lamp. This light beam is half way between a spot and a floodlight and the design of the reflector makes it exceptionally efficient. The narrow angle of the light beam enables one to put all of the light just where it is needed. To diffuse the light and diminish the heat when used at close range, a fabric diffusing screen, attached to a metal rim, may be quickly snapped over the front of the reflector.

Two of these Kodalites furnish an excellent form of illumination for copying, for small commercial set-ups or for amateur movies. The folding telescopic stand can be raised or lowered and the reflector tilted to the desired angle and held in place by binding nuts. The use of 500-watt lamps makes it possible to use two Kodalites on one ordinary electric outlet.

Kodalite, including switch and cord (without lamp) . . . \$22.00
Kodalite, 500-watt lamp, 100 or 110 volt 4.85
Kodalite Diffuser 1.50
Grained Fibre Carrying Case for two Kodalites, diffusers and lamps . . . 18.00



Eastman Developing and Fixing Box

MADE of hard rubber, this box is light in weight but substantial and may be used for either developing or fixing.

It has no cover but hard rubber floating lids are supplied as listed below.
Eastman Developing and Fixing Box No. 2, for 8 5 x 7 Films or Plates in Eastman Film Developing Hangers or Core Plate Racks . . . \$4.00
No. 3, for 20 5 x 7, 12 6½ x 8½ or 8 x 10 Films or Plates 6.00
No. 3A, for 6 6½ x 8½ or 8 x 10 Films or Plates 5.00
No. 4, for 20 5 x 7 or 12 7 x 11 Films or Plates 6.00
Hard Rubber Floating Lid, for No. 2 Box 1.20
Do., for No. 3 Box 1.20

Eastman Standard Hard Rubber Trays



"THE standard by which others are judged." A tray that will stand hard usage. Made of first-quality hard rubber. Extra heavy, reinforced corners and edges.

Eastman Standard Hard Rubber Tray:

4 x 5 . . . \$1.15	6½ x 8½ \$2.25	12 x 16 . \$ 5.75	19 x 23 . \$14.00
5 x 7 . . . 1.50	8 x 10 2.75	15 x 19 . 9.50	21 x 26 . 18.00
5 x 8 . . . 1.75	10 x 12 3.75	18 x 22 . 12.00	

Bull's Eye Tray

THIS tray is made of special composition, thoroughly vulcanized, acid chemical-proof. It will give good service but will not last as long as a Hard Rubber Tray.

Bull's Eye Tray:			
3¼ x 4¼	\$0.30	3½ x 12 (No. 4 Panoram)	\$1.30
2½ x 7 (No. 1 Panoram)60	5 x 880
4 x 540	6½ x 8½	1.05
3¼ x 5½ (4 x 6)45	8 x 10	1.40

Eastman Enameled Trays

THIS tray is manufactured especially for photographic use and should not be confused with inferior grades. First quality, heavy, white porcelain enamel.

Eastman Enamel Tray:			
4 x 6	\$0.65	10 x 12	\$1.50
5 x 785	11 x 14	2.80
7 x 9	1.10	14 x 17	3.60
8 x 10	1.25	16 x 20	5.00
		18 x 22	\$10.00
		20 x 24	12.00
		23 x 28	13.50

R. O. C. Negative Washer

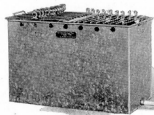
THE flow of water is through a pipe to the bottom of the tank from which point it rises evenly, flowing out at the top. The tank itself is of galvanized iron; the separate plate-holding rack is of zinc. Plates may be dried in the rack after removal from the tank.

R. O. C. Negative Washer:	
For 25 4 x 5 plates	\$ 5.50
For 25 5 x 7 plates	6.50
For 30 8 x 10 plates	8.50



Eastman Portrait Film Washing Tank

A VERY efficient film washer. Water flows in at bottom and rises evenly through perforations in a false bottom, escaping at the top. A cross piece provides for washing both 5 x 7 and 8 x 10 films in the tank at the same time. Accommodates 18 No. 2, or 24 No. 4, Portrait Film Hangers in the 8 x 10 size, and 24 No. 2, or 32 No. 4, 5 x 7 hangers. Made of heavy sheet metal.



Eastman Portrait Film Washing Tank . . . \$6.00

Eastman Hard Rubber Fixing Box

THIS box is made of heavy hard rubber, each size up to and including 8 x 10, holding one dozen plates, the 11 x 14 and 14 x 17 holding one-half dozen plates. The ribs are smooth-finished, preventing scratches, and making the box easy to clean. A ridge at the bottom keeps the plates above any sediment that may collect.

3¼ x 4¼	\$3.50	6½ x 8½	\$ 6.75
4 x 5	4.00	8 x 10	7.50
4¼ x 6½	4.50	11 x 14	15.00
5 x 7	5.00	14 x 17	20.00

R. O. C. Hard Rubber Fixing Box

THIS box is provided with grooves on all four sides. Each size will take several sizes of plates. The No. 1 Box will hold twenty 3¼ x 4¼, or 4¼ x 6½, or eleven 6½ x 8½ plates. The No. 2 Box will hold twenty-two 4 x 5, 5 x 7, or 5 x 8, or eleven 8 x 10 plates. A cover is supplied.

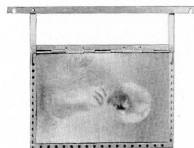
R. O. C. Hard Rubber Fixing Box,	No. 1	No. 2
with cover	\$7.50	\$8.50



Eastman Film Developing Hangers Nos. 4, 3 and 2

THESE metal hangers remove the necessity for handling the wet films and insure better and cleaner results.

No. 4 is the model that is most simple and convenient. The film slides through side channels into an end channel and is held in place by the hinged top. No clips are used and the film may be developed, fixed, washed and dried without removing it from the hanger.



no. 4

No. 3 is provided with an extra long cross-bar (16-inch) for use in developing all sizes of x-ray film in deep tanks.

No. 2 is for professional film. The film is attached by hand to four metal clips at the corners or it may be loaded automatically by the use of the Film Loading Fixture.



no. 2

Eastman Film Developing Hangers:		No. 4	No. 3	No. 2	No. 4	No. 3	No. 2
4¼ x 6½	No. 4	\$0.60	8 x 10	\$0.75	\$1.25	\$0.75	
4¾ x 6½60	7 x 117575	
5 x 760	10 x 12		1.50	1.00	
5 x 875	11 x 14		1.75	1.35	
6½ x 8½75	14 x 17		2.00	1.35	
Extra Clips for Film Developing Hangers, Nos. 2 and 3, each05

Eastman Film Loading Fixtures

PRACTICALLY automatic in action. The No. 2 illustrated is for loading Eastman Professional Film in Eastman Film Developing Hanger, No. 2, while the one size of the No. 4 Fixture may be used for loading all No. 4 hangers.

Eastman Film Loading Fixture No. 2:

4¼ x 6½	2.50	6½ x 8½	2.75
4¾ x 6½	2.50	8 x 10	2.75
5 x 7	2.50	7 x 11	2.75
5 x 8	2.75		

Eastman Film Loading Fixture No. 4 2.00



Eastman Film Hanger

FOR suspending roll film or Film Pack Developing Hangers in deep tanks as shown in illustration. Made of metal resistant to corrosion. No. 1 is for the 8-inch tank, No. 2 for 10-inch tank, No. 3 for 12-inch tank, No. 4 for 11-inch tank, and No. 5 for 9½-inch tank.

Eastman Film Hanger. \$0.35

Film Pack Developing Hanger

TO photo-finishers using vertical tanks, this hanger proves indispensable. Each accommodates an entire Film Pack, fastened to the clips as shown in the illustration. It is doubled over the Eastman Film Hanger by means of a hinge in the center.

Film Pack Developing Hanger, for twelve films \$1.50
Extra Clips for Hangers, per dozen90

Improved Kodak Film Clip

A PHOTO-FINISHER'S clip made of metal resistant to corrosion. Is two inches wide with two deep-set jaws that take a firm grip on the film. The water drains from the clip through holes, it does not corrode, it retains its gripping strength. Furnished with or without lead weights.

Improved Kodak Film Clips, each \$0.35
Do., with lead weights 0.45



Kodak Junior Film Clip

MADE of metal resistant to corrosion, somewhat smaller and lighter than the Kodak Film Clip, but thoroughly practical and convenient especially for the smaller sizes of films. It has a convenient hooked slot for hanging, is 1⅞ inches wide and has two teeth that firmly grip the film.

Kodak Junior Film Clips, each \$0.15



Eastman Film Developing Clips

FOR suspending roll films during the finishing process. Has a strong grip. Made of brass, heavily nickel-plated.

Eastman Film Developing Clips, per pair. 3½ in. 5 in.
\$0.30 \$0.40



Core Plate Developing Rack

FOR use with dry plates only. May be used in any developing box of suitable size.



Core Plate Developing Rack:

Plate Size	Bar Length	Price
5 x 7	9¾	.60
8 x 10	12¾	.75
7 x 11	16	.75
10 x 12 (also takes 8 x 10)	16	1.40
11 x 14, 14 x 17	16	1.75

The Kodak Print Washer

THE Kodak Print Washer is unlike other machines operated by electricity or a force of water. It is built on a new principle and will thoroughly wash 200 prints, up to and including 3¼ x 5½ at one time and at no power cost.

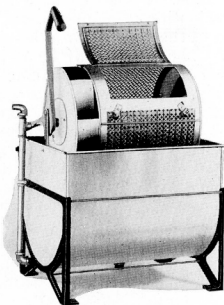
Air is fed into the intake pipe which is made in the form of an aspirator. The air carried in with the water goes into a series of cups on one end of the cage and develops sufficient lifting power to turn the cage from 12 to 16 revolutions per minute. The flow of water is no greater than is actually necessary to wash the prints. This makes the washer distinctly economical and convenient.

The washing cage is made of embossed, perforated sheet metal, counterbalanced to turn easily on its bearings. Four metal fins attached to the outside of the cage aid in increasing the circulation of water and cut down the time required for washing. Since the embossing eliminates practically all flat surfaces, the possibility of prints sticking to the cage is reduced to a minimum.

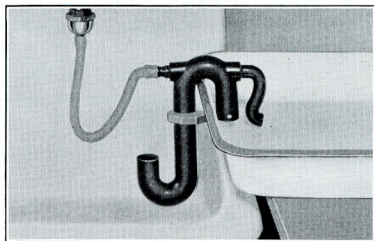
There is an overflow outlet at the top of the tank and a drain plug at the bottom. As only a small flow of water is required, connections may be made with an ordinary hose.

There is also a lifting device to raise the cage from the water when prints are inserted or removed. The washer measures 22½ inches wide by 25 inches deep and stands 22½ inches high, over all, when in operation. An extension base, supplied separately, increases this height by 14 inches.

Kodak Print Washer \$55.00
Extension Base, extra 7.50



Eastman Automatic Tray Siphon



THE Eastman Automatic Tray Siphon is an inexpensive device that converts an ordinary tray into a very effective washing machine. It was invented by a scientist and it works on correct scientific principles—puts fresh water in at the top and siphons out the chemically laden water from the bottom of the tray.

The siphon may be adjusted to maintain the water at any desired level. The water coming in the tray makes a complete circuit, siphons out at the same speed it enters, and the force of the stream may be adjusted to keep the prints separated and in motion. There is also the assurance that the water will be completely changed every few minutes.

The Tray Siphon attaches to any water tap and is adjustable to any tray. Its efficiency and inexpensiveness make it a device every photographer should add to his workroom equipment.

Eastman Automatic Tray Siphon with hose \$6.00

Retouching or Magnifying Glass



THESE lenses are double convex, of white glass, and accurately ground to suitable foci for retouching. They afford the bright image of moderate magnification required for fine retouching, and are securely incased

in a nickel rim with a handle of ebonized wood.

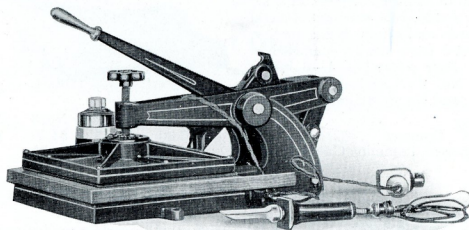
	2½ inch	3 inch	3½ inch	4 inch
Retouching or Magnifying Glass	\$2.00	\$2.25	\$2.75	\$3.25

Kodak Dry Mounting Press

DRY mounting is the logical means of attaching the print to the mount because there is no moisture in the adhesive and as a result the gelatin of the print does not expand and contract as is inevitably the case when paste or other moist adhesives are used.

The Kodak Dry Mounting Press furnishes the ideal method of using Kodak Dry Mounting Tissue (see page 48). The process is rapid, the prints lie flat even on thin mounts and single or double weight prints are handled with equally satisfactory results. The mounting tissue is moisture proof, giving the print an added protection and helping it to retain the good appearance it has when it leaves your studio. Prints may be single or double mounted on cards or in folders. The press consists of a flat bed to which is hinged a metal platen heated by electricity. After a piece of mounting tissue has been lightly "tacked" or stuck to the back of the prints by means of the electrically heated Tacking Iron supplied, they are then trimmed, tacked to the mount and placed face up on the bed of the press, covered with a thin cardboard and the heated platen is brought into contact by pulling a lever. A few seconds pressure suffices to mount them smoothly and permanently. The Kodak Dry Mounting Press has an 11 x 14 platen and by giving repeated impressions, may be used for prints of twice the width of the press bed and any length.

The price includes an electrically heated Tacking Iron, cord and plugs. The Press as regularly furnished is for 110-125 volt circuits. If wanted for 220-volt circuits, please specify.



PRICES

Kodak Dry Mounting Press; 11 x 14, including electrically-heated tacking iron, cord and plug	\$65.00
Extra Electric Tacking Irons, each	8.00

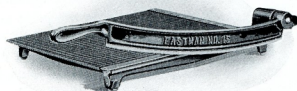
Eastman Metal Trimmer

CONSISTENT accuracy is the chief merit of this all-metal trimmer. The self-sharpening knife is of high grade tempered steel, so shaped and mounted as to cut with the minimum of effort and with perfect registry. The metal table is marked off in half-inch squares. These marks are engraved into the surface, not merely painted on and the surface is then given a highly polished enamel finish.

A brass ruler is attached to the table and a transparent trimming gauge is supplied. There are three sizes: No. 10—10 inches wide, No. 15—15 inches and No. 20—20 inches.

Eastman Metal Trimmer

No. 10	No. 15	No. 20
\$15.00	\$20.00	\$25.00

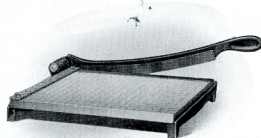


A margin gauge which clamps to the brass ruler of the Nos. 15 and 20 trimmers consists of a strip of brass at right angles to the trimming knife. It facilitates the trimming of prints with white margins of any width.

Eastman Margin Gauge \$3.50

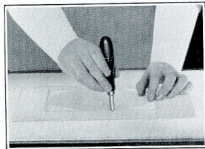
R. O. C. Trimmer

A TRIMMER of unusual merit at a very low price. The bed is of wood, marked in half-inch squares. Has accurate wooden rule, substantial metal standards, and a knife of fine quality. All metal parts neatly enameled in black. Four sizes: No. 1—6 inches wide; No. 2—8 inches; No. 3—10 inches; and No. 4—12 inches.



R. O. C. Trimmer	No. 1	No. 2	No. 3	No. 4
Transparent Trimming Gauge	\$3.00	\$3.75	\$4.50	\$5.00
	.75	.75	.75	.75

Eastman Print Embosser



THIS handy tool is used for producing plate sunk centers on prints or enlargements. A steel ball rotating in the end of a rod permits one to exert the pressure necessary to emboss a sharp line at the edge of the embossing form without cracking the print. Such embossing adds greatly to the attractiveness of the print.

Eastman Print Embosser \$0.50

Eastman Revolving Print Trimmer

A TOOL steel cutting wheel mounted in a wood handle for trimming prints in cutting forms. The wheel and post are removable.



Eastman Revolving Print Trimmer \$1.25
Extra Post and Wheel 35

Brass Forms

MADE of thin hard brass, ground smooth on the edges and with polished surface. For trimming prints and cutting masks.

Diameter			Diameter		
No.	Shape (Inches)	Price	No. Shape (Inches)	Price	
00	Oval 1 3/4 x 2	\$0.75	E	Oval 2 1/4 x 4	\$0.85
1	Oval 2 x 2 3/4, old 1/4 Cabinet75	F	Oval 2 1/2 x 5 1/885
2	Oval 3 x 4 1/8, 1/4 Cabinet85	G	Oval 2 1/2 x 5 3/895
3	Oval 3 1/8 x 4 1/8 Cabinet90	H	Oval 1 1/8 x 3 3/875
4	Oval 2 5/8 x 3 3/885	J	Oval 2 3/4 x 5 3/885
5	Oval 3 3/4 x 5 3/4	1.15	K	Oval 3 1/8 x 6 3/8	1.05
6	Oval 4 1/4 x 6	1.40	L	Oval 1 1/8 x 2 1/875
9	Circle 2 1/485	M	Oval 2 1/2 x 3 1/275
10	Circle 385	N	Oval 1 1/4 x 1 3/475
11	Circle 3 1/485	O	Oval 4 1/4 x 6 1/2	1.95
A	Oval 1 1/8 x 2 1/875	P	Oval 5 x 7	2.10
B	Oval 1 1/2 x 3 1/875	Q	Oval 6 x 8	2.30
C	Oval 2 1/8 x 5 1/885	R	Oval 7 x 9	2.90
D	Oval 1 3/8 x 2 1/875	S	Oval 8 x 10	3.30

Eastman Post Office Paper

A SAFE paper for covering lights used in bromide or lantern slide work. Specially selected both in quality and color. Size 20 x 26 inches.

Eastman Post Office Paper	Per doz. sheets	500 sheets
	\$0.25	\$8.50

Eastman Ceba Paper

A TOUGH tissue for use in vignetting or diffusing.

Eastman Ceba Paper, 19 x 24 inches	Per dozen	500 sheets
	\$0.25	\$7.00

Orange and Ruby Fabric

GOOD, stout fabric, especially selected as to color. For covering darkroom windows or lights. In ordering please state whether orange or ruby fabric is wanted. Width, 36 inches.

Orange and Ruby Fabric, per yard \$1.00

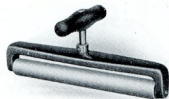
Eastman Orange and Ruby Glass

FOR darkroom use. Of first quality stock, and correct in color. In ordering please state whether orange or ruby glass is wanted.

Orange and Ruby Glass:

3½ x 4½ . . . \$0.10	5 x 8 . . . \$0.20	8 x 10 . . . \$0.35
4 x 515	6½ x 8½30	10 x 1250
5 x 720	7 x 930	11 x 1465

Eastman Single Print Roller



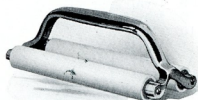
TEN-INCH roller, covered with heavy, first quality white rubber, extra strong nickeled frame. Weight, five pounds. The heavy handle set at right angles to the roller affords a strong grip, and makes this type especially effective for heavy work.

Eastman Single Print Roller \$4.75

Eastman Double Print Roller No. 1

EIGHT-INCH rolls covered with first quality heavy white rubber; both rolls hang exactly true, insuring perfect contact with the print. The solid, heavily nickeled handle affords a strong, firm grip. Weight, five pounds.

Eastman Double Print Roller, No. 1 . . . \$5.25



Eastman Special Squeegee



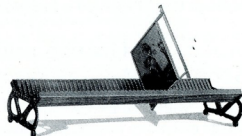
CONSISTS of a specially designed double wooden grip with an edge of superior quality, live velvet rubber, 8 inches in width. For use in connection with Ferrotypes plates to squeegee prints in contact.

Eastman Special Squeegee \$1.25

Eastman Film and Plate Drying Rack

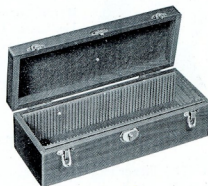
A SUBSTANTIAL rack that will hold 50 glass negatives or 50 film negatives in hands. Measures 33 inches long, 9 inches wide and 5½ inches high.

Eastman Film and Plate Drying Rack \$2.50



Eastman Lantern Slide Boxes

MADE in three styles and sizes—all strong enough to bear the load and all designed for convenience and ready accessibility. Each slide pocket is numbered and the inside of the cover contains a numbered index. Nos. 1 and 2 are made of birch with Turkey Umber finish, and No. 3 is of beech with natural wood finish. Nos. 1 and 2 have respectively a capacity of 60 and 120 slides and measure 4¾ x 4¾ x 12½ inches, and 4¾ x 8¼ x 12¾ inches; covers fitted with spring clasp. No. 3 (illustrated), measuring 4¾ x 5½ x 15 inches, holds 50 slides, and is equipped with leather handle, brass clasps and lock.



	No. 1	No. 2	No. 3
Eastman Lantern Slide Boxes	\$3.50	\$5.00	\$6.50

Eastman Tested Hydrometer

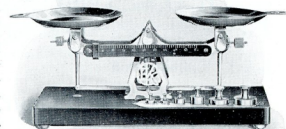
FOR assuring correctly compounded formulae only a *tested* hydrometer is of real value. The Eastman Tested Hydrometer is accurate and allows a ready reading of the scale even in poor light.

Eastman Tested Hydrometer. \$1.50
Do., without jar 1.00



Eastman Studio Scales

A TWO-PAN scale of the accuracy requisite for handling photographic chemicals. Furnished with weights and markings for either the avoirdupois or metric system of weights. A graduated beam with sliding weight provides for minor weights, in the avoirdupois scale of from 1 to 50 grains and in the metric scale from 1 to 50 decigrams. Additional metal weights to be placed in the pan are as follows: Avoirdupois 2 of 50 grains, 1 each of ¼, ½ and 1 ounce and 1 of 2 ounces; Metric, 2 of 5, and 1 each of 10, 15, 30 and 60 grams. With nickeled and black enameled metal pans and a mahogany finished base—9-inches long—these scales are as attractive in appearance as they are accurate in performance. *In ordering please specify whether the avoirdupois or the metric system scale is wanted.*



Eastman Studio Scales—avoirdupois or metric system \$4.50
Extra Set of Weights—avoirdupois or metric system.70

Eastman Timer



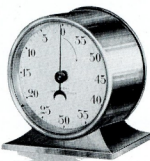
THE most important factor in the making of good prints is the accurate exposure of every print in the order. The Eastman Timer solves the problem. Has both minute and split-second hands which may be instantly re-set. The large and plainly marked dial is easily read in subdued light.

Eastman Timer \$5.00

Kodak Interval Timer

THIS Timer can be set for any number of minutes from 1 to 55 and at the expiration of that time the bell will ring its warning. It is useful for timing such operations as development, fixing and washing or for extremely long exposures.

Kodak Interval Timer \$5.00



Eastman Visible Graduate

A STRONG and accurately molded graduate; the graduations are opaque and thus can readily be seen under the darkroom light—a distinct advantage. Has pedestal base.

Eastman Visible Graduate . . . 2 oz. 4 oz. 8 oz. 16 oz. 32 oz.
\$0.30 \$0.40 \$0.50 \$0.80 \$1.00

Eastman Graduate, Engraved

THIS graduate is made of first quality glass. Markings are carefully engraved. Has pedestal base, easy to grasp.

Eastman Graduate, Engraved:

1 dram	1 oz.	2 oz.	4 oz.	8 oz.	16 oz.	32 oz.
\$0.40	\$0.40	\$0.40	\$0.45	\$0.55	\$0.90	\$1.60

R. O. C. Tumbler Graduate, Moulded

INEXPENSIVE but reliable. Shaped like a water glass with lip for pouring.

	2 oz.	4 oz.	8 oz.	16 oz.	32 oz.
R. O. C. Tumbler Graduate.	\$0.12	\$0.15	\$0.20	\$0.30	\$0.60

Eastman Measuring Jug

MADE of strong, clear glass with molded graduations as follows: 4, 8, 12, 16, 20, 24, 28 and 32 ounces; also graduated for ½ pint and 1 pint and 1 quart. The removable top, when inverted, may be used as a funnel.

Eastman Measuring Jug \$1.25



Eastman Print Paddle

A HANDY and practical print-room accessory. Made of hard rubber, and is therefore acid and chemical proof. Of exactly the right shape for the proper immersion of prints in the fixing bath. Length, 12 inches.

Eastman Per ½ doz. Per doz.
Print Paddle . \$2.50 \$5.00



Eastman Hard Rubber Stirring Rod

MADE of pure, hard rubber, molded around an aluminum wire core, they are unbreakable and also acid and chemical proof. Ten inches in length.

Per ½ doz. Per doz.
Eastman Hard Rubber Stirring Rod \$1.55 \$3.00

Glass Stirring Rod

THESE rods are made of strong, tough glass; both ends ground smooth. Very serviceable because proof against all chemical action. Made in three lengths.

8-inch 10-inch 12-inch
Glass Stirring Rod \$0.06 \$0.10 \$0.15

Eastman Thermometer

INDISPENSABLE in tank development. Made with concave back to fit inside of tank, and with hook for hanging. Figures and degree marks easily read.

Eastman Thermometer \$0.90



Thermometer Stirring Rod (Glass)



A HAPPY combination of two workroom necessities. A solid glass stirring rod ¼ inch in diameter and 9¼ inches long, enclosing a specially tested, reliable thermometer. The liquid is black permacolor which is easily seen in the dark-room light. One end is flattened for crushing purposes. Packed in wooden box.

Thermometer Stirring Rod \$1.25

Rubber Apron

MADE of first quality, heavy fabric. The base of the fabric is rubber and it is therefore water and chemical proof. 30 inches wide, three lengths.

	No. 1, 40-inch	No. 2, 46-inch	No. 3, 52-inch
Rubber Apron	\$1.60	\$1.75	\$2.00

Eastman Laboratory Apron

THIS 30-inch wide apron is full cut, made of extra strong fabric, and coated with a composition that makes the fabric both water-proof and crack-proof. It will withstand the hardest darkroom and laboratory usage.

No. 1, 40-inch No. 2, 46-inch No. 3, 52-inch
 Eastman Laboratory Apron \$1.60 \$1.75 \$2.00

Rubber Gloves

MADE of pure, seamless rubber, with pebbled surface. They are of sufficient weight for durability but are thin enough to retain the operator's sense of touch. In ordering, please specify which of the five sizes is wanted: 7, 7½, 8, 8½ or 9.

Rubber Gloves, per pair \$1.00

Rubber Finger Tips

MADE of pure rubber, with reinforced ends. A practical protection for the fingers against chemical action.

Rubber Finger Tips, per set of 3 \$0.15

Kodak Dry Mounting Tissue

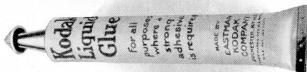
AN adhesive that sticks without moisture. A sheet of tissue is tacked to the back of a print and the mount by the touch of a hot iron or the tacking iron supplied with Kodak Dry Mounting Presses. (See page 41.) Pressure of a heated iron or the press plate causes immediate and permanent adherence. Mounts prints without curl on even the thinnest of mounts.

Size	No. of doz. per Package	Price per Package	Price per Gross	Size	No. of doz. per Package	Price per Package	Price per Gross
1½ x 2½	3	\$0.10	\$0.25	3½ x 12	1	\$0.10	\$1.00
1½ x 2½	3	.10	.25	5½ x 7¾	1	.10	1.00
2¼ x 3¼	3	.10	.25	6 x 8	1	.15	1.50
2½ x 4¼	3	.10	.30	6½ x 8½	1	.15	1.50
2½ x 4½	3	.10	.30	7 x 9	1	.15	1.50
3½ x 3½	3	.10	.30	7½ x 9½	1	.20	1.90
3¼ x 4¼	3	.10	.30	7 x 11	1	.20	1.90
3¼ x 5½	2	.10	.50	8 x 10	1	.20	1.90
3½ x 5½	2	.10	.50	10 x 12	1	.30	3.10
(Cabinet)	2	.10	.50	11 x 14	1	.40	3.75
4 x 5	1	.10	.50	12 x 15	1	.45	4.40
4 x 6	1	.10	.75	14 x 17	1	.55	5.60
4½ x 6½	1	.10	.75	16 x 20	1	.75	7.50
5 x 7	1	.10	1.00	17 x 20	1	.80	8.10
5 x 8	1	.10	1.00	18 x 22	1	.95	9.40

5 yards, 20 inches wide, per roll65
 10 yards, 20 inches wide, per roll1.30

Kodak Liquid Glue

A FINE glue for print tipping as well as for general use. The tube with its pencil shaped tip is convenient to use while the cap keeps the glue off the fingers. An excellent, quick drying glue specially suited for photographic mounting.



Kodak Liquid Glue, per tube \$0.15

Eastman Double-Coated Mounting Tape

CONSISTS of a strip of thin, tough white paper, one-half inch in width, coated on both sides with a powerful adhesive. Supplied only in 100-foot rolls. Ruled edges of package facilitate measuring.

Eastman Double-Coated Mounting Tape, per roll \$0.25

Gum Paper

CONSISTS of a half-inch strip of either black or white paper wound in 300-yard rolls with strong adhesive on one side only.

Gum Paper, per roll \$0.75

In ordering, please specify which color is wanted

Eastman Lantern Slide Binders

STRONG, black paper, ½-inch in width, coated with a superior quality adhesive, 50 strips to the package. Each strip, 15½ inches in length, is sufficient for binding one slide.

Eastman Lantern Slide Binders, per package \$0.20

Eastman Photo Paste

A SOLID first quality white paste prepared especially for photographic use. Does not readily cockle the print—will not discolor the mount.

	4 oz. jar	½ gallon tin can	1 gallon tin can
Eastman Photo Paste.	\$0.25	\$1.55	\$2.85

Kodak Photo Paste

2 oz. tube \$0.15
 1½ oz. tube10

Special Ferrotypes Plates

THESE metal plates are specially made for use in squeezeing prints to obtain a high glossy finish. The surface is glazed.

Special Ferrotypes Plates, each:	10 x 14	14 x 20	18 x 24
Light	\$0.20	.30	\$0.65
Heavy			\$1.00

Eastman Etching Knife



THIS highly tempered knife is shaped to promote both speed and certainty in etching. It is 5¾ inches in length. Each knife is enclosed in a fabric covered case, backed with fine emery paper for stropping purposes.

Eastman Etching Knife, with stropping case \$1.50

Eastman Retouching Fluid

THIS fluid gives excellent tooth for pencil and allows of much building up. Either soft or hard pencils may be used. In one ounce bottles.

Eastman Retouching Fluid, per bottle \$0.25

Eastman Spotting Colors

FOR spotting prints or negatives. Consists of a set of three colors: black, white and sepia, on cellulose cards which may be used as a palette.

Eastman Spotting Colors, per set \$0.25

India Ink

SUPPLIED in stick form for spotting negatives or prints. This ink is of the highest quality and its form is the most effective for the work required.

India Ink, per stick \$0.15

Eastman Pencils

THE Eastman *Negative* Pencil is made especially for working on film surfaces, for sketching in backgrounds on the glass side of negatives, building up shadows, titling negatives; also for labeling solution bottles, trays, etc.

The Eastman Photo, and Eastman Sepia, *Spotting* Pencils for spotting photographs, are far more satisfactory than the old method requiring India ink or moist color.



Eastman Negative Pencil, per box of 1 dozen \$1.60

Eastman Photo Spotting Pencil, per box of 1 dozen 1.60

Eastman Sepia Spotting Pencil, per box of 1 dozen 1.60

Red Sable Spotting Brush

OF excellent quality. For spotting prints or negatives. Twelve sizes of camel's hair tufts offering a selection for every requirement.

Red Sable Spotting Brush Nos. 1 to 6 \$0.15 Nos. 7 to 9 \$0.20 Nos. 10 to 12 \$0.25

Tin Bound Brushes

FOR general photographic use. Well bound to assure good service at a low price. Either bristle or camel's hair available.



Tin Bound Brushes:	1 inch	1½ inch	2 inch	2½ inch
Bristle	\$0.18	\$0.25	\$0.30	\$0.35
Camel's Hair30	.40	.50	.60

Rubber Set Brushes



IN process of manufacture the hairs or bristles of these brushes are seated in hard rubber and then vulcanized, preventing loosening of hairs. Both bristle and camel's hair available in sizes from 1 to 3½ inches in width.

Rubber Set Brushes:

	1" 1½" 2" 2½" 3" 3½"
Bristle	\$0.55 \$0.75 \$0.95 \$1.00 \$1.05 \$1.30
Camel's Hair90 1.20 1.40 1.90 2.30 3.00



Kodalak W. P.

A VERY fine transparent lacquer for waterproofing prints so as to protect both surfaces. Produces no perceptible change in surface or tone. Kodalak W. P. Thinner, sold separately, is for use when Kodalak W. P., through air action, becomes too thick. Each in 16-ounce bottles.

Kodalak W. P.	Per Bottle \$1.00
Kodalak W. P. Thinner80

Kodalak No. 4 Brush Lacquer

THIS black lacquer for the refinishing of metal parts is supplied to meet the requirements of dealers' repair departments. In 8-ounce bottles.

Kodalak No. 4 Brush Lacquer, per bottle \$0.60

Eastman Opaque

ESPECIALLY prepared for blocking out, and other similar work that may be required on negatives.

Eastman Opaque, per tube	No. 1 \$0.25	No. 2 \$0.40
------------------------------------	--------------	--------------

Eastman Universal Opaque

A FINE opaque for blocking out backgrounds on either film or plate negatives.

No. 1, 1 oz. jar.	\$0.25
No. 2, 2½ oz. jar.50
No. 3, 7½ oz. jar.	1.00
No. 4, 18½ oz. jar.	2.00



Eastman Abrasive Reducer

A FINELY ground abrasive in paste form that gives quick and satisfactory results in local reduction.

Eastman Abrasive Reducer, per can . . . \$0.50

Nepera Waxing Solution

FOR helping detail and adding luster to sepia prints. Especially effective on sepia-toned Royal Bromide prints. Apply evenly with canton flannel and rub into the surface. In 4-ounce bottles.

Nepera Waxing Solution, per bottle . . . \$0.40

Kodak Leather Dressing

A SPECIAL preparation which we manufacture exclusively for a camera dressing; unsurpassed for refinishing all real and imitation black leather articles.

Kodak Leather Dressing, per pint . . . \$0.75

Eastman Filter Cotton

FIRST quality cotton, prepared especially for laboratory use.

Eastman Filter cotton, per package . . . 4 oz., \$0.40; 1 lb., \$1.30

Blotting Paper

HIGHLY absorbent stock and chemically pure. Made in two weights—regular and extra heavy, the former weighing 100 and the latter 120 pounds to the ream.

Blotting Paper:		1 doz.	¼ ream	½ ream	1 ream
Sheet 19 x 24 in.	sheets	(125 sheets)	(250 sheets)	(500 sheets)	
Regular weight	\$.80	\$8.00	\$15.00	\$27.00	
Extra Heavy	.90	9.00	17.00	33.00	
Rolls, regular 75 pounds, 20 inches wide	 \$21.00			
20 inches x 10 feet	40			
Extra Heavy, 75 pounds, 24 inches wide	 \$21.00			
24 inches x 10 feet	60			

Safety Photo Mailer

THE Safety Photo Mailer consists of a stout tension envelope with patented lock seal and a strong, double fold of corrugated board.

Safety Photo Mailers:

	Per 100
A—for 5 x 7 or smaller prints	\$ 9.00
B—for 9 $\frac{3}{8}$ x 11 $\frac{3}{8}$ or smaller prints	15.00
C—for 11 $\frac{3}{8}$ x 13 $\frac{3}{8}$ or smaller prints	17.50
D—for 12 $\frac{3}{8}$ x 15 $\frac{3}{8}$ or smaller prints	25.00
E—for 17 $\frac{1}{4}$ x 20 $\frac{1}{4}$ or smaller prints	35.00

Eastman Ground Glass Substitute

FOR producing a ground-glass effect on the back of negatives. Flows evenly, dries quickly. Invaluable in working up negatives. In 4-ounce bottles.

Eastman Ground Glass Substitute, per bottle . . . \$0.60

Fine Ground Glass

EXTRA quality with an even satin finish, designed strictly for photographic use.

Fine Ground Glass:			
4 x 5	\$0.15	6 $\frac{1}{2}$ x 8 $\frac{1}{2}$	\$0.25
5 x 720	8 x 1030
5 x 820	11 x 1475
		14 x 17	\$1.50
		16 x 20	1.75
		17 x 20	1.85
		18 x 22	2.00

Eastman Lantern Slide Cover Glass

FOR covering the emulsion side of a lantern slide to protect it from damage. First quality, cut accurately to size: 3 $\frac{1}{4}$ x 4.

	Per doz.	30 doz.	Per case
Eastman Lantern Slide Cover Glass . . .	\$0.35	\$10.00	1,108 lights \$20.00

Flashed Opal Glass

A FIRST quality flashed glass for use as a diffusion screen. Just the right quality to afford even diffusing.

Flashed Opal Glass:			
8 x 10	\$0.60	14 x 14	\$1.60
10 x 1070	14 x 17	1.80
10 x 1270	16 x 20	2.40
11 x 14	1.20	18 x 22	3.00
For R. B. Enlarging Camera, 11 x 11		1.20	
Wratten Safelight Lamp, No. 1, 6 $\frac{1}{4}$ x 9 $\frac{3}{8}$60	

Eastman Loose-Leaf Studio Register

AN excellent Studio Register in which the rulings provide for a full record for both cash and credit transactions, and a complete history of all orders.

The cover is of heavy board, cloth covered with leather back and corners, and the words "Studio Register" embossed in gilt. It measures 15 $\frac{1}{2}$ x 8 $\frac{1}{2}$ inches and is supplied with 100 leaves and an index. Leaves may be readily inserted or removed.

PRICES

Eastman Loose-Leaf Studio Register, complete	\$8.00
Extra sheets, in packages of 100, with index	3.50
Binders for filing	3.50
Extra Index	1.25

Eastman Studio Register System



THE DESK BOX

A SYSTEM for recording the income, expenses and net profit of a professional photographer's business designed with a view to economy of time and money.

The *Eastman Card Index Studio Register* consists of a quartered oak desk box with 300 printed cards and a transfer box. The cards have spaces for a complete record of the customer's order from receipt to delivery and for a statement of the account. There are also two full sets of alphabetical guide cards as well as monthly and daily guide cards.

The *Eastman Studio Cash Book* is a leather bound cloth covered book of 161 pages specially ruled and printed for studio book-keeping. It provides for a complete record of all cash transactions. *Eastman Studio Shop Tickets* and *Eastman Studio Follow-up Cards* are also available.

"System for the Photographic Studio"—a book describing the working of the plan is sent free on request.

PRICES

Eastman Card Index Studio Register		\$12.00
Extra Desk Box		3.00
Extra Transfer Case		5.00
Eastman Studio Cash Book, 11½ x 12 inches		8.00
	Per 100	Per 1,000
Extra Ruled Studio Register Cards, 4 x 6 inches	\$0.90	\$7.25
Eastman Studio Shop Tickets, 4 x 6 inches75	6.00
Eastman Studio Follow-up Cards, 4 x 6 inches90	7.25

Photo Finishers' Delivery Envelopes

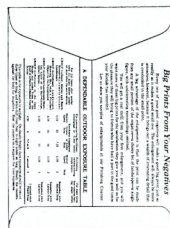
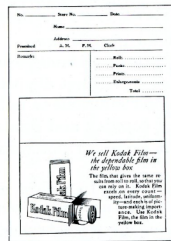
A WELL designed stoutly made two-pocket envelope of Brown Kraft for use by photo finishers in delivering prints and negatives. They are supplied either with or without the following sentences printed on the inside flaps of the pockets: "All films should be developed promptly after exposure. For the best results use Eastman Film, and let us develop it" and "For the best results use Eastman Film and let us develop it promptly after exposure." There is no extra charge for this printing.

Photo Finishers' Delivery Envelopes with or without printing:*

For prints up to	Per 100	Per 1,000
No. 1 3¼ x 4¼	\$0.85	\$ 7.00
No. 2 4 x 6	1.00	9.00
No. 3 5 x 7	1.35	12.50

*In ordering, please specify which is wanted.

Photo Finishing Single Pocket Envelopes



THESE envelopes are furnished in two sizes measuring 5½ x 7½ and 4½ x 6½ inches. They are made of a tough paper stock and are furnished only in film-carton yellow. The front contains a printed order blank, a space 1½ x 4¼ inches on the 5½ x 7½ and 1¼ x 3¾ inches on the 4½ x 6½ for the finisher's imprint and a film advertisement in color. On the back is an exposure table and an advertisement for enlargements. The prices at which these envelopes are sold are only made possible because production runs into the millions and they are sold without a profit. Your orders for Photo Finishing Single Pocket Envelopes should be sent direct to the Eastman Kodak Company, Rochester, N. Y. Please make instructions concerning your imprint as specific as possible. It is also necessary to ask that your remittance accompany your order in case you do not have an account at Rochester. The prices for these envelopes include imprinting one signature of four lines with the quantity ordered, as follows:

Lots of	Per Thousand	
	5½ x 7½	4½ x 6½
1,000	\$3.00	\$2.75
2,000	2.85	2.60
3,000	2.70	2.45
5,000	2.50	2.25
10,000	2.25	2.00
20,000 and up	2.00	1.75

Eastman Plates

EASTMAN Plates cover the entire range of photographic requirements. There is an Eastman Plate for every purpose.

Eastman 40 is the ideal fast plate for portraiture.

Eastman 36 is a fine plate for portraiture and landscape work.

Eastman Speedway has the extreme speed that fits it to general photography under unfavorable conditions of light.

Eastman Process is a slow plate for copying and similar work.

Eastman Universal is an excellent plate for portraiture, view and commercial work.

Eastman Polychrome is highly sensitive to yellow and green and is an excellent plate for portraiture or landscape work.

Eastman Commercial is a plate of medium slow speed with excellent orthochromatic quality.

Eastman D. C. (Double Coated) Ortho is an excellent combination of orthochromatic and non-halation qualities.

Eastman S. C. (Single Coated) Ortho is an excellent color-sensitive plate for general work.

Eastman 33 is a slow plate especially suited for commercial work.

Eastman Post Card Plates are for quick-finish work.

Eastman Lantern Slide Plates are made in two speeds—the Regular for normal negatives—the Slow for soft negatives.

Eastman 40, 36, Speedway, Process, Universal, Polychrome, Commercial, 33 and S. C. Ortho

Sizes	Case Wt. Lbs.	No. Doz. in Case	Per Doz.	Sizes	Case Wt. Lbs.	No. Doz. in Case	Per Doz.
2½ x 2½	15	30	\$0.40	6½ x 8½	55	12	\$ 2.20
2¼ x 3¼	22	30	.45	7 x 10	60	10	2.75
3¼ x 3½	30	30	.55	8 x 10	70	10	3.20
3½ x 3½	30	30	.55	7 x 11	70	10	3.20
3¼ x 4¼	35	30	.65	7 x 17	75	4	7.50
3¼ x 5½	50	30	.90	10 x 12	45	3	5.60
4 x 5	50	30	.90	11 x 14	55	3	8.05
4¼ x 5½	60	30	1.05	14 x 17	55	2	13.80
3¼ x 6½	55	30	1.05	12 x 20	60	2	22.00
4¼ x 6½	65	30	1.30	16 x 20	75	1½	24.75
4¾ x 6½	65	26	1.35	17 x 20	80	1½	26.75
5 x 7	60	20	1.45	18 x 22	75	1	34.25
5 x 8	65	20	1.70	20 x 24	75	1	42.75

Eastman D. C. Ortho

Sizes	Case Wt. Lbs.	No. Doz. in Case	Per Doz.	Sizes	Case Wt. Lbs.	No. Doz. in Case	Per Doz.
2½ x 2½	15	30	\$0.50	7 x 10	60	10	\$ 3.45
2¼ x 3¼	22	30	.55	8 x 10	70	10	4.00
3¼ x 3½	30	30	.65	7 x 11	70	10	4.00
3½ x 3½	30	30	.65	7 x 17	75	4	10.00
3¼ x 4¼	35	30	.80	10 x 12	45	3	7.00
3¼ x 5½	50	30	1.10	11 x 14	55	3	10.05
4 x 5	50	30	1.10	14 x 17	55	2	17.25
4¼ x 5½	60	30	1.30	12 x 20	60	2	27.25
4¼ x 6½	65	30	1.65	16 x 20	75	1½	30.75
4¾ x 6½	65	26	1.70	17 x 20	80	1½	33.25
5 x 7	60	20	1.80	18 x 22	75	1	42.75
5 x 8	65	20	2.10	20 x 24	75	1	53.25
6½ x 8½	55	12	2.75				

Eastman Post Card Plates

Sizes	Case Wt. Lbs.	No. Doz. in Case	Per Doz.	Sizes	Case Wt. Lbs.	No. Doz. in Case	Per Doz.
2½ x 2½	58	100	\$0.40	4 x 5	50	30	\$0.90
3¼ x 4¼	35	30	.65	4¼ x 6½	70	30	1.30
3¼ x 5½	45	30	.90				

Eastman Lantern Slide Plates, Regular and Slow

Sizes	No. Doz. in Case	Per Doz.	Size	No. Doz. in Case	Per Doz.
3¼ x 4	30	\$0.50	6½ x 8	12	\$2.00
3¼ x 3¼ Eng. size	30	.50			

Eastman Lantern Slide Cover Glass

Size	No. in Case	Per Case	Per Doz.	Size	No. in Case	Per Case
3¼ x 4	30 doz.	\$10.00	\$0.35	3¼ x 4	1108 Lights	\$20.00

Wratten & Wainwright Panchromatic, Process Panchromatic and Wratten "M" Plates

Completely color-sensitive plates for commercial and technical work

Sizes	Case Wt. Lbs.	No. Doz. in Case	Per Doz.	Sizes	Case Wt. Lbs.	No. Doz. in Case	Per Doz.
3½ x 3½	30	30	\$0.65	7 x 11	61	10	\$ 4.00
3¼ x 4¼	30½	30	.80	10 x 12	45	3	7.00
3¼ x 5½	50	30	1.10	11 x 14	55	3	10.05
4 x 5	51½	30	1.10	14 x 17	55	2	17.25
4¼ x 6½	65	30	1.65	12 x 20	60	2	27.25
5 x 7	58	20	1.80	16 x 20	95	1½	30.75
6½ x 8½	54	12	2.75	18 x 22	58	1	42.75
8 x 10	65	10	4.00	20 x 24	70	1	53.25

Eastman Portrait Film

EASTMAN Portrait Film has largely replaced the glass plate, not alone for its greater convenience and many physical advantages but for the superior quality of the negatives it produces. Because of its freedom from halation film produces negatives having a distinctive quality not obtainable in any glass plate.

Eastman Portrait Film *Par Speed* is the film for general portraiture. Eastman Portrait Film *Super Speed* is the film for unusual conditions. It has the greatest speed of any negative making material made for portraiture. Eastman Portrait Panchromatic Film is a completely color-sensitive film having the long scale of gradation essential for portraiture.

For the commercial photographer there is, in addition to Portrait Film, Eastman Commercial Film, having a slow emulsion suitable for general work and copying where color correction is not necessary. It is also furnished with a matte surfaced emulsion. Eastman Commercial Ortho Film is sensitive to green and yellow, but not to red. Eastman Commercial Panchromatic is a fast film, completely color sensitive and specially suited for all forms of commercial work where the correct rendering of colors is desirable. Eastman Process and Panchromatic Process Film, having a slow emulsion are capable of producing exceptional contrast.

Eastman Portrait Film *Par Speed, Super Speed* Eastman Commercial Ortho, Commercial Matte, Commercial and Process Film

PRICE LIST

Sizes	No. Doz. in Case	Per Doz.	Sizes	Per Doz.
3¼ x 4¼	30	\$ 0.65	18 x 22	\$ 22.80
3¼ x 5½	30	.90	20 x 24	27.60
4 x 5	30	.90	20 x 26	29.90
4¼ x 6½	30	1.30	22 x 24	30.40
4¼ x 6½	26	1.35	20 x 28	32.20
5 x 7	20	* 1.45	22 x 27	34.15
5 x 8	20	1.70	22 x 28	35.45
6½ x 8½	12	* 2.20	20 x 30	34.50
7 x 10	10	2.75	22 x 30	37.95
7 x 11	10	3.20	24 x 30	41.40
8 x 10	10	* 3.20	25 x 30	43.15
10 x 12	3	5.60	24 x 36	49.70
7 x 17	4	5.60	24 x 40	55.20
11 x 14	3	8.05	28 x 36	58.00
8 x 20	2	8.35	30 x 34	58.65
12 x 20	2	12.65	26 x 40	59.80
14 x 17	2	13.70	30 x 40	69.00
16 x 20	..	18.40	30 x 60	103.50
17 x 20	..	19.55		

NOTE—Special sizes will be furnished at prices approximately proportionate to the next larger size.

*In ordering case lots, please specify if one dozen package is wanted. Unless otherwise ordered the two-dozen package will be supplied.

Eastman Portrait Panchromatic, Eastman Commercial Panchromatic and Process Panchromatic Film

Sizes	No. Doz. in Case	Per Doz.	Sizes	Per Doz.
3¼ x 4¼	30	\$ 0.75	18 x 22	\$ 25.10
3¼ x 5½	30	1.00	20 x 24	30.40
4 x 5	30	1.00	20 x 26	32.90
4¼ x 6½	30	1.45	22 x 24	33.45
4¼ x 6½	26	1.50	20 x 28	35.45
5 x 7	20	* 1.60	22 x 27	37.60
5 x 8	20	1.90	22 x 28	39.00
6½ x 8½	12	* 2.45	20 x 30	37.95
7 x 10	10	3.05	22 x 30	41.75
7 x 11	10	3.55	24 x 30	45.55
8 x 10	10	* 3.55	25 x 30	47.50
10 x 12	3	6.20	24 x 36	54.70
7 x 17	4	6.20	24 x 40	60.75
11 x 14	3	8.90	28 x 36	63.80
8 x 20	2	9.20	30 x 34	64.55
12 x 20	2	13.95	26 x 40	65.80
14 x 17	2	15.10	30 x 40	75.90
16 x 20	..	20.25	30 x 60	113.85
17 x 20	..	21.55		

NOTE—Special sizes will be furnished at prices approximately proportionate to the next larger size.

*In ordering case lots, please specify if one dozen package is wanted. Unless otherwise ordered, the two-dozen package will be supplied.

Cirkut Film

Eastman N. C. Film for Cirkut Cameras. This film is furnished in daylight-loading spools.

For Cirkut Camera No. 5		Per Roll		
5" x 15"	..	\$0.30	5" x 30"	Per Roll \$0.65
5" x 20"	..	.45	5" x 42"	.85
For Cirkut Outfits No. 6 and No. 8				
6½" x 3'	..	\$0.95	8" x 4'	\$1.55
6½" x 6'	..	1.90	8" x 8'	3.10
6½" x 10'	..	3.10	8" x 12'	4.65
For Cirkut Cameras No. 10 and No. 16				
6" x 5'	..	\$1.45	10" x 10'	\$ 4.80
6" x 10'	..	2.90	10" x 15'	7.20
6" x 15'	..	4.35	10" x 20'	9.60
8" x 5'	..	1.90	12" x 6'	3.45
8" x 10'	..	3.80	12" x 10'	5.70
8" x 15'	..	5.70	12" x 15'	8.55
8" x 20'	..	7.60	16" x 6'	4.60
10" x 4'	..	1.90	16" x 10'	7.60
10" x 6'	..	2.90	16" x 20'	15.20

IMPORTANT—Film for Cirkut Outfits No. 6 and No. 8 cannot be used in Cirkut Cameras, and film for Cirkut Cameras No. 10 and No. 16 cannot be used in Cirkut Outfits or attachments. In ordering, specify "for Cirkut Outfit" or "for Cirkut Camera."

Lengths other than listed above will not be supplied.

Kotava Safety Positive Film

A POSITIVE emulsion on heavy, ivory tinted film base, producing fine carbon effects, ideal either for sepia toned prints or oil colored miniatures.

Sizes	Per ½ doz.	Sizes	Per ½ doz.
3¼ x 4¼	\$1.10	8 x 10	\$ 6.00
4 x 5	1.50	11 x 14	11.50
5 x 7	2.60	16 x 20	24.00
6½ x 8½	4.00	20 x 24	36.00

Ad-Type Paper

AD-TYPE is a smooth, single weight, natural surface paper with slight lustre. It folds without cracking—does not curl. Its six degrees of contrast, Nos. 0, 1, 2, 3, 4 and 5, make it possible to secure brilliant commercial prints from any type of negative.

Sizes	Gross	500 Sheets	Sizes	Gross	500 Sheets
8 x 10	\$5.00	\$16.60	14 x 17	\$14.60	\$45.50
9 x 11	6.20	20.60	16 x 20	19.60	65.15
10 x 12	7.50	24.95	20 x 24	29.00	96.45
11 x 14	9.55	31.75	30 x 40	74.35	247.20

Vitava Papers

VITAVA offers the photographer a paper of the highest quality for every branch of professional photographic work. The Athena brand for contact printing is supplied in the following weights and surfaces: Single Weight, A—Cream white, semi-matte; N—White, rough lustre. Double weight, B—Cream white, semi-matte; C—Cream white, matte; D—White, rough matte; E—Rough—Buff, matte; E—Smooth—Buff, matte; E—Semi-matte—Buff, smooth; J—Buff, rough lustre; L—White, rough lustre; M—Cream white, "Old Master"; O—Buff, "Old Master"; R—White "Linen Finish," slight lustre; S—Buff, "Linen Finish," slight lustre; V—Ivory tint, smooth semi-matte; W—Ivory tint, rough semi-matte; X—Ivory tint "Silk," semi-matte; Y—Cream white, "Silk," semi-matte.

Vitava Etching Brown is somewhat faster than Athena and is supplied in the following, double weight grades: B—White, and K—Buff, smooth, semi-matte surface; H—Buff, rough, slight lustre.

Vitava Opal, for either contact printing or enlarging, is a medium fast, warm tone paper and is supplied in six grades all of which are double weight: B—Cream white, semi-matte; C—Cream white, matte; G—Natural white, fine grained lustre; H—Natural white fine grained matte; P—Old Ivory, fine grained lustre; Q—Old Ivory, fine grained matte.

Vitava Projection Paper is a fast paper of contact quality for enlarging and is furnished in all of the Athena grades and, in addition, F—Glossy.

Vitava Rapid Black is a medium fast paper for enlarging and is furnished in the following grades: Single Weight, A—White, smooth semi-matte; P—White, smooth glossy. Double Weight, B—White, smooth semi-matte; C—White, smooth matte; D—White, medium rough, absolute matte surface (no lustre); J—Buff, medium rough, lustre finish.

Vitava Alba is a paper of medium speed, furnished in one grade: B1—White, double weight, smooth semi-matte, soft.

VITAVA Double Weight Etching Brown, B, H, and K Athena B, C, D, E, J, L, V, W, X, and Y. Alba B

Sizes	1 Dz.	2 Dz.	½ Gro.	Gro.	Sizes	1 Dz.	½ Gro.	Gro.
3¾ x 5½	\$.65	...	\$3.00	...	8 x 10½	\$1.15	...	\$6.25 \$11.55
4 x 6	.75	...	3.30	...	8 x 11	1.40	...	6.55 12.15
4¼ x 6½	.80	...	3.90	...	8½ x 11	1.45	...	6.90 12.80
4¾ x 6½	.80	...	4.40	...	8 x 12	1.45	...	7.15 13.15
5 x 7	\$5.50	...	\$2.65	4.90	9 x 11	1.45	...	7.30 13.45
5 x 8	.65	...	3.15	5.65	10 x 12	1.70	...	8.70 16.30
5½ x 7¾	.75	...	3.25	5.95	10 x 14	1.90	...	10.00 19.00
6 x 8	.75	...	3.65	6.70	11 x 14	2.05	...	10.95 20.75
6 x 9	.80	...	4.05	7.45	12 x 15	2.50	...	12.95 24.45
6 x 10	.95	...	4.50	8.25	12 x 16	2.65	...	13.75 25.90
6½ x 8½	.80	...	4.20	7.65	12 x 17	2.70	...	14.50 27.45
7 x 9	.95	...	4.70	8.70	12 x 20	3.25	...	17.00 32.25
7 x 10	1.05	...	5.15	9.65	14 x 17	3.15	...	16.70 31.75
7 x 11	1.05	...	5.65	10.45	16 x 20	4.05	...	22.15 42.50
7½ x 9½	1.05	...	5.30	9.65	18 x 22	5.00	...	27.05 52.30
8 x 10	1.05	...	5.90	10.90	20 x 24	5.95	...	32.55 63.05

VITAVA ATHENA, ETCHING BROWN AND ALBA, DOUBLE WEIGHT—ROLLS

	10-ft. Rolls	10-yd. Rolls	10-ft. Rolls	10-yd. Rolls
20 inches wide	\$2.95	\$7.35	40 inches wide	\$5.55 \$14.20

VITAVA Athena Old Master M and O and Linen Finish R and S Double Weight

Sizes	1 Dz.	2 Dz.	½ Gro.	Gro.	Sizes	1 Dz.	½ Gro.	Gro.
3¾ x 5½	\$.70	...	\$3.30	...	8 x 10½	\$1.25	...	\$6.85 \$12.70
4 x 6	.85	...	3.65	...	8 x 11	1.55	...	7.20 13.35
4¼ x 6½	.90	...	4.30	...	8½ x 11	1.60	...	7.60 14.10
4¾ x 6½	.90	...	4.85	...	8 x 12	1.60	...	7.85 14.45
5 x 7	\$5.55	...	\$2.90	5.40	9 x 11	1.60	...	8.05 14.80
5 x 8	.70	...	3.45	6.20	10 x 12	1.85	...	9.55 17.95
5½ x 7¾	.80	...	3.55	6.55	10 x 14	2.10	...	11.00 20.90
6 x 8	.80	...	4.00	7.35	11 x 14	2.25	...	12.05 22.80
6 x 9	.90	...	4.45	8.20	12 x 15	2.75	...	14.25 26.90
6 x 10	1.05	...	4.95	9.05	12 x 16	2.90	...	15.10 28.50
6½ x 8½	.90	...	4.60	8.40	12 x 17	2.95	...	15.95 30.20
7 x 9	1.05	...	5.15	9.55	12 x 20	3.55	...	18.70 35.45
7 x 10	1.15	...	5.65	10.60	14 x 17	3.45	...	18.35 34.90
7 x 11	1.15	...	6.20	11.50	16 x 20	4.45	...	24.35 46.75
7½ x 9½	1.15	...	5.85	10.60	18 x 22	5.50	...	29.75 57.55
8 x 10	1.15	...	6.50	12.00	20 x 24	6.55	...	35.80 69.35

ROLLS

	10-ft. Rolls	10-yd. Rolls	10-ft. Rolls	10-yd. Rolls
20 inches wide	\$3.10	\$7.70	40 inches wide	\$5.80 \$14.85

VITAVA Single Weight—Athena A and N

Sizes	1 Dz.	2 Dz.	½ Gro.	Gro.	Sizes	1 Dz.	½ Gro.	Gro.
3 7/8 x 5 1/2	...	\$5.50	...	\$2.40	8 x 10 1/2	\$9.90	\$5.00	\$9.25
4 x 660	...	2.65	8 x 11	1.10	...	5.25
4 1/4 x 6 1/265	...	3.10	8 1/2 x 11	1.15	...	5.50
4 3/4 x 6 1/265	...	3.50	8 x 12	1.15	...	5.70
5 x 7	\$4.40	...	\$2.10	3.90	9 x 11	1.15	...	5.85
5 x 8	.50	...	2.50	4.50	10 x 12	1.35	...	6.95
5 1/2 x 7 3/4	.60	...	2.60	4.75	10 x 14	1.50	...	8.00
6 x 8	.60	...	2.90	5.35	11 x 14	1.65	...	8.75
6 x 9	.65	...	3.25	5.95	12 x 15	2.00	...	10.35
6 x 10	.75	...	3.60	6.60	12 x 16	2.10	...	11.00
6 1/2 x 8 1/2	.65	...	3.35	6.10	12 x 17	2.15	...	11.60
7 x 9	.75	...	3.75	6.95	12 x 20	2.60	...	13.60
7 x 10	.85	...	4.10	7.70	14 x 17	2.50	...	13.35
7 x 11	.85	...	4.50	8.35	16 x 20	3.25	...	17.70
7 1/2 x 9 1/2	.85	...	4.25	7.70	18 x 22	4.00	...	21.65
8 x 10	.85	...	4.70	8.70	20 x 24	4.75	...	26.05

VITAVA ATHENA A AND N—ROLLS

	10-ft. Rolls	10-yd. Rolls		10-ft. Rolls	10-yd. Rolls
20 inches wide	\$2.45	\$5.90	40 inches wide	\$4.60	\$11.45

VITAVA Single Weight—Projection Paper A, F and N Rapid Black A and F

Sizes	1 Dz.	2 Dz.	½ Gro.	Gro.	Sizes	1 Dz.	½ Gro.	Gro.
3 7/8 x 5 1/2	...	\$4.40	...	\$2.05	8 x 10 1/2	\$8.80	\$4.25	\$7.85
4 x 650	...	2.25	8 x 11	.90	...	4.45
4 1/4 x 6 1/255	...	2.60	8 1/2 x 11	1.00	...	4.65
4 3/4 x 6 1/255	...	2.95	8 x 12	1.00	...	4.80
5 x 7	\$3.35	...	\$1.75	3.30	9 x 11	1.00	...	4.95
5 x 8	.40	...	2.10	3.80	10 x 12	1.15	...	5.85
5 1/2 x 7 3/4	.50	...	2.20	4.00	10 x 14	1.25	...	6.75
6 x 8	.50	...	2.45	4.50	11 x 14	1.40	...	7.40
6 x 9	.55	...	2.75	5.00	12 x 15	1.70	...	8.75
6 x 10	.65	...	3.05	5.55	12 x 16	1.75	...	9.30
6 1/2 x 8 1/2	.55	...	2.80	5.15	12 x 17	1.85	...	9.80
7 x 9	.65	...	3.15	5.85	12 x 20	2.20	...	11.50
7 x 10	.70	...	3.45	6.50	14 x 17	2.10	...	11.30
7 x 11	.70	...	3.80	7.05	16 x 20	2.75	...	14.95
7 1/2 x 9 1/2	.70	...	3.60	6.50	18 x 22	3.40	...	18.25
8 x 10	.75	...	3.95	7.35	20 x 24	4.00	...	22.00

ROLLS

	10-ft. Rolls	10-yd. Rolls		10-ft. Rolls	10-yd. Rolls
20 inches wide	\$2.00	\$4.85	40 inches wide	\$3.75	\$9.35

All other sizes to be considered as special. Special sizes furnished at prices 10% greater than the next larger listed size for sizes up to 5 x 7, and 5% greater than the next larger listed size for sizes larger than 5 x 7.

Special narrow width rolls will be furnished when ordered in sufficient quantities to take the full width of a roll 40 inches wide.

VITAVA Double Weight—Projection Paper B, C, D, E, J, L, M, O, R, S, V, W, X and Y— Rapid Black B, C, D, E and J— Opal B, C, G, H, P and Q

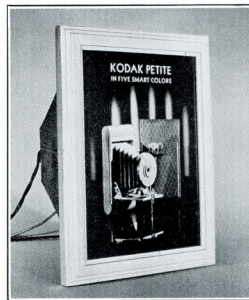
Sizes	1 Dz.	2 Dz.	½ Gro.	Gro.	Sizes	1 Dz.	½ Gro.	Gro.
3 7/8 x 5 1/2	...	\$5.50	...	\$2.55	8 x 10 1/2	\$1.00	...	\$5.30
4 x 665	...	2.80	8 x 11	1.15	...	5.55
4 1/4 x 6 1/270	...	3.25	8 1/2 x 11	1.25	...	5.80
4 3/4 x 6 1/270	...	3.70	8 x 12	1.25	...	6.00
5 x 7	\$4.45	...	\$2.20	4.15	9 x 11	1.25	...	6.20
5 x 8	.50	...	2.65	4.75	10 x 12	1.45	...	7.30
5 1/2 x 7 3/4	.65	...	2.75	5.00	10 x 14	1.55	...	8.45
6 x 8	.65	...	3.05	5.65	11 x 14	1.75	...	9.25
6 x 9	.70	...	3.45	6.25	12 x 15	2.15	...	10.95
6 x 10	.80	...	3.80	6.95	12 x 16	2.20	...	11.65
6 1/2 x 8 1/2	.70	...	3.50	6.45	12 x 17	2.30	...	12.25
7 x 9	.80	...	3.95	7.30	12 x 20	2.75	...	14.40
7 x 10	.90	...	4.30	8.15	14 x 17	2.65	...	14.15
7 x 11	.90	...	4.75	8.80	16 x 20	3.45	...	18.70
7 1/2 x 9 1/2	.90	...	4.50	8.15	18 x 22	4.25	...	22.80
8 x 10	.95	...	4.95	9.20	20 x 24	5.00	...	27.50

ROLLS

	10-ft. Rolls	10-yd. Rolls		10-ft. Rolls	10-yd. Rolls
20 inches wide	\$2.50	\$6.30	40 inches wide	\$4.75	\$12.15

All other sizes to be considered as special. Special sizes furnished at prices 10% greater than the next larger size for sizes up to 5 x 7, and 5% greater than the next larger listed size for sizes larger than 5 x 7. Special narrow width rolls will be furnished when ordered in sufficient quantities to take the full width of a roll 40 inches wide.

Eastman Translite Paper



EASTMAN Translite is a paper for producing photographic transparencies in black and white, or color. It is a duo-coated paper having a sensitive emulsion on both sides. When exposed and developed, an image appears on each side, one on the surface that has been in contact with the negative and one printed through the paper stock on the back. When placed in an illuminator the Translite print has wonderful depth and luminosity. When colored on the back these prints immediately appeal to advertisers and producers of window display material.

The price of Eastman Translite Paper is the same as for Vitava Rapid Black, listed above. It is not furnished in 500-sheet packages or rolls.

Velox Papers

THE amateur photographer makes his negatives under conditions exactly the opposite of conditions in the portrait studio—he works in the contrasty glare of outdoor sunshine. His negatives require for the best results a paper of a very different quality. Velox is the only paper made for the sole purpose of fitting the requirements of the amateur negative. And it does fit them more perfectly than any other paper.

Velox prints are distinguishable by the word VELOX, faintly tinted on the back. It is made in four degrees of contrast and four surfaces.

Numerical designations are used to denote the degree of contrast in Velox emulsions as follows: No. 1, for negatives of extreme contrast; No. 2, for average negatives; No. 3, for flat negatives; No. 4, for extremely flat negatives.

VELOX—Single Weight

GLOSSY Nos. 1, 2, 3, 4

VELVET Nos. 1, 2, 3, 4

Glossy Nos. 1, 2, 3, 4				Velvet Nos. 1, 2, 3, 4				
Sizes	1 Dz.	2 Dz.	½ Gro.	Gro.	Sizes	1 Dz.	½ Gro.	Gro.
1 7/8 x 2 3/4	\$.25			\$.85	5 1/2 x 7 3/4	\$.60	\$.26	\$.48
2 1/4 x 3 1/4	.35			1.00	6 x 8	.60	.29	.54
2 1/2 x 3 1/2	.35			1.20	6 x 9	.65	.33	.59
2 1/2 x 4 1/4	.35			1.35	6 x 10	.75	.36	.65
2 3/4 x 3 3/4	.35			1.35	6 1/2 x 8 1/2	.65	.33	.61
2 3/4 x 4 1/2	.35			1.50	7 x 9	.75	.38	.69
2 7/8 x 4 7/8	.40			1.70	7 x 10	.85	.41	.75
3 x 4	.40			1.50	7 x 11	.85	.45	.84
3 x 4 3/4	.40			1.75	7 1/2 x 9 1/2	.85	.43	.75
3 1/8 x 5 1/8	.40			1.95	8 x 10	.85	.47	.87
3 1/4 x 4 1/4	.40			1.70	8 x 10 1/2	.90	.50	.93
3 1/4 x 4 7/8	.40			1.95	8 x 11	1.10	.53	.97
3 1/4 x 5 1/2	.40			2.10	8 1/2 x 11	1.20	.55	1.03
3 1/2 x 4 1/2	.40			1.85	8 x 12	1.20	.57	1.06
3 1/2 x 5 1/2	.50			2.25	9 x 11	1.20	.59	1.08
3 1/2 x 5 3/4	.50			2.35	10 x 12	1.35	.65	1.13
3 3/4 x 4 3/4	.40			2.10	10 x 14	1.50	.80	1.50
3 7/8 x 5 1/2	.50			2.45	11 x 14	1.70	.88	1.67
4 x 5	.50			2.35	12 x 15	2.00	1.04	1.95
4 x 6	.60			2.70	12 x 16	2.10	1.11	2.08
4 1/4 x 5 1/4	.60			2.60	12 x 17	2.20	1.17	2.10
4 1/4 x 5 1/2	.60			2.70	12 x 20	2.60	1.37	2.59
4 1/4 x 6 1/2	.65			3.10	14 x 17	2.50	1.34	2.55
4 1/2 x 5 1/2	.65			2.75	16 x 20	3.30	1.78	34.20
4 3/4 x 6 1/2	.65			3.55	18 x 22	4.05	2.17	42.10
5 x 7	\$.40	\$.21	3.95		20 x 24	4.80	26.20	50.75
5 x 8	.50		2.50	4.55				

All other sizes to be considered as special. Special sizes furnished at prices 10% greater than the next larger listed size for sizes up to 5 x 7, and 5% greater than the next larger listed size for sizes larger than 5 x 7.

VELOX PAPER IN ROLLS—Single Weight

Sizes	Per Roll	Sizes	Per Roll
2 1/8 in. x 200 ft.	\$4.90	8 in. x 50 ft.	\$3.45
2 3/8 in. x 200 ft.	5.10	8 in. x 100 ft.	6.55
2 5/8 in. x 200 ft.	5.25	10 in. x 50 ft.	4.20
5 in. x 100 ft.	4.75	10 in. x 100 ft.	7.95
6 in. x 50 ft.	2.85	20 in. x 10 ft.	2.05
6 in. x 100 ft.	4.95	20 in. x 10 yds.	5.00
6 1/2 in. x 50 ft.	2.95	40 in. x 10 ft.	3.80
6 1/2 in. x 100 ft.	5.40	40 in. x 10 yds.	9.65

Special narrow width rolls will be furnished when ordered in sufficient quantities to take the full width of a roll 40 inches wide.

VELOX—Double Weight

GLOSSY Nos. 2, 3

Sizes	1 Dz.	2 Dz.	½ Gro.	Gro.	Sizes	1 Dz.	½ Gro.	Gro.
1 7/8 x 2 3/4	\$.30			\$1.05	5 1/2 x 7 3/4	\$.75	\$.32	\$6.00
2 1/4 x 3 1/4	.45			1.25	6 x 8	.75	.37	6.75
2 1/2 x 3 1/2	.45			1.50	6 x 9	.80	.41	7.45
2 1/2 x 4 1/4	.45			1.70	6 x 10	.95	.45	8.30
2 3/4 x 3 3/4	.45			1.70	6 1/2 x 8 1/2	.80	.42	7.70
2 3/4 x 4 1/2	.45			1.90	7 x 9	.95	.47	8.70
2 7/8 x 4 7/8	.50			2.15	7 x 10	1.05	.51	9.70
3 x 4	.50			1.90	7 x 11	1.05	.57	10.50
3 x 4 3/4	.50			2.20	7 1/2 x 9 1/2	1.05	.54	9.70
3 1/8 x 5 1/8	.50			2.45	8 x 10	1.05	.59	10.95
3 1/4 x 4 1/4	.50			2.15	8 x 10 1/2	1.15	.63	11.65
3 1/4 x 4 7/8	.50			2.45	8 x 11	1.40	.65	12.20
3 1/4 x 5 1/2	.50			2.65	8 1/2 x 11	1.50	.69	12.95
3 1/2 x 4 1/2	.50			2.30	8 x 12	1.50	.71	13.25
3 1/2 x 5 1/2	.65			2.80	9 x 11	1.50	.74	13.55
3 1/2 x 5 3/4	.65			2.95	10 x 12	1.70	.87	16.35
3 3/4 x 4 3/4	.50			2.65	10 x 14	1.90	1.05	19.15
3 7/8 x 5 1/2	.65			3.05	11 x 14	2.15	1.10	20.90
4 x 5	.65			2.95	12 x 15	2.50	1.30	24.55
4 x 6	.75			3.40	12 x 16	2.65	1.39	26.05
4 1/4 x 5 1/4	.75			3.25	12 x 17	2.75	1.46	27.65
4 1/4 x 5 1/2	.75			3.40	12 x 20	3.25	1.75	32.45
4 1/4 x 6 1/2	.80			3.90	14 x 17	3.15	1.68	31.95
4 1/2 x 5 1/2	.80			3.45	16 x 20	4.15	2.25	42.75
4 3/4 x 6 1/2	.80			4.45	18 x 22	5.05	2.72	52.65
5 x 7	\$.55	\$.26	4.95		20 x 24	6.00	3.27	63.45
5 x 8	.65		3.15	5.70				

All other sizes to be considered as special. Special sizes furnished at prices 10% greater than the next larger listed size for sizes up to 5 x 7, and 5% greater than the next larger listed size for sizes larger than 5 x 7.

VELOX PAPER IN ROLLS—Double Weight

Sizes	Per Roll	Sizes	Per Roll
2 1/8 in. x 200 ft.	\$7.00	8 in. x 50 ft.	\$4.60
2 3/8 in. x 200 ft.	7.25	8 in. x 100 ft.	8.65
2 1/2 in. x 200 ft.	7.45	10 in. x 50 ft.	5.55
5 in. x 100 ft.	6.05	10 in. x 100 ft.	10.70
5 in. x 50 ft.	3.65	20 in. x 10 ft.	2.60
6 in. x 100 ft.	6.60	20 in. x 10 yds.	6.65
6 1/2 in. x 50 ft.	3.90	40 in. x 10 ft.	4.95
6 1/2 in. x 100 ft.	7.20	40 in. x 10 yds.	12.90

Special narrow width rolls will be furnished when ordered in sufficient quantities to take the full width of a roll 40 inches wide.

VELOX for Photo Finishers

500 Sheet Packages

Sizes	Single Weight	Double Weight	Sizes	Single Weight	Double Weight
1 7/8 x 2 3/4	\$2.25	\$2.80	3 1/2 x 4 1/2	\$4.90	\$6.15
2 1/4 x 3 3/4	2.65	3.30	3 3/2 x 5 1/2	6.00	7.50
2 1/2 x 3 1/2	3.20	4.00	3 3/2 x 5 3/4	6.25	7.80
2 3/4 x 4 3/4	3.60	4.50	3 3/2 x 4 3/4	5.60	7.00
2 3/4 x 4 3/4	3.60	4.50	3 3/4 x 5 1/2	6.50	8.15
2 3/4 x 4 1/2	4.00	5.00	4 x 5	6.25	7.80
2 3/8 x 4 1/2	4.50	5.65	4 x 6	7.15	8.95
3 x 4	4.00	5.00	4 1/4 x 5 1/4	6.90	8.65
3 x 4 3/4	4.65	5.80	4 1/4 x 5 1/2	7.15	8.95
3 1/2 x 5 1/8	5.20	6.50	4 1/4 x 6 1/2	8.25	10.30
3 1/4 x 4 1/4	4.50	5.65	4 1/2 x 5 1/2	7.30	9.15
3 1/4 x 4 7/8	5.20	6.50	4 3/4 x 6 1/2	9.40	11.75
3 1/4 x 5 1/2	5.60	7.00	5 x 7	10.50	13.15

All other sizes to be considered as special. Special sizes up to 5 x 7 furnished at prices 10% greater than the next larger listed size.

VELOX PAPER IN 250, 500 AND 1000 FOOT ROLLS

Width of Roll Inches	Single Weight		Double Weight		Width of Roll Inches	Single Weight		Double Weight	
	500 Ft.	1,000 Ft.	250 Ft.	500 Ft.		500 Ft.	1,000 Ft.	250 Ft.	500 Ft.
1 7/8	\$7.85	\$14.90	\$5.80	\$10.75	3 7/8	\$14.85	\$28.55	\$10.55	\$19.95
2 1/4	9.25	17.45	6.75	12.45	4 1/8	17.00	32.85	12.00	22.85
2 1/2	10.10	19.15	7.35	13.65	4 3/8	17.85	34.55	12.60	24.00
2 3/8	10.55	20.00	7.65	14.20	4 7/8	18.30	35.35	12.90	24.60
2 3/4	10.95	20.85	7.90	14.80	5 1/8	19.15	37.10	13.45	25.80
2 7/8	11.40	21.70	8.20	15.35	5 1/2	20.40	39.65	14.35	27.50
3 1/8	12.25	23.45	8.80	16.50	5 3/4	21.25	41.35	14.90	28.50
3 1/4	12.65	24.25	9.05	17.10	6 1/8	22.55	43.90	15.80	30.40
3 1/2	13.55	26.00	9.70	18.25	6 3/8	23.85	46.45	16.65	32.10
3 3/8	13.95	26.80	9.95	18.80	6 3/4	24.70	48.20	17.25	33.25
3 3/4	14.40	27.70	10.25	19.40					

Splicing Allowances

250-ft. roll, 2 splices 500-ft. roll, 3 splices 1,000-ft. roll, 4 splices

Wound on strawboard core 1 1/4" in diameter. When ordered on special core, extra charge to be made to cover cost of same.

Rolls of width not listed, but length listed above, when ordering in quantities sufficient to take the full width of a 40-inch roll, will be supplied at the price of the next wider listed size increased by 10%.

Kodak Velvet Green

KODAK Velvet Green is a developing-out paper requiring the same developer as Velox. It requires considerably more exposure and should be used only with negatives of good contrast. Furnished in single and double weight, semi-matte surface.

Kodak Velvet Green—Single Weight

Sizes	1 Dz.	2 Dz.	1/2 Gro.	Gro.	Sizes	1 Dz.	2 Dz.	1/2 Gro.	Gro.
1 1/2 x 2 3/4	\$.20	\$.70	5 1/2 x 7 3/4	\$.45	...	\$.20	\$.85
2 1/4 x 3 1/4	.2580	6 x 8	.45	...	2.35	4.30
2 1/2 x 3 1/2	.2595	6 x 9	.55	...	2.65	4.80
2 1/2 x 4 1/4	.25	...	1.10	1.10	6 x 10	.60	...	2.90	5.35
2 3/4 x 3 3/4	.25	...	1.10	1.10	6 1/2 x 8 1/2	.55	...	2.70	4.95
2 3/4 x 4 1/2	.25	...	1.20	1.20	7 x 9	.60	...	3.05	5.60
2 7/8 x 4 7/8	.35	...	1.35	1.35	7 x 10	.70	...	3.30	6.20
3 x 4	.35	...	1.20	1.20	7 x 11	.70	...	3.65	6.75
3 x 4 3/4	.35	...	1.40	1.40	7 1/2 x 9 1/2	.70	...	3.45	6.20
3 1/2 x 5 1/8	.35	...	1.55	1.55	8 x 10	.70	...	3.80	7.00
3 3/4 x 4 3/4	.35	...	1.35	1.35	8 x 10 1/2	.75	...	4.05	7.50
3 3/4 x 4 7/8	.35	...	1.55	1.55	8 x 11	.90	...	4.25	7.85
3 3/4 x 5 1/2	.35	...	1.70	1.70	8 1/2 x 11	.95	...	4.45	8.30
3 3/4 x 4 1/2	.35	...	1.50	1.50	8 x 12	.95	...	4.60	8.50
3 3/4 x 5 3/4	.40	...	1.80	1.80	9 x 11	.95	...	4.75	8.70
3 3/2 x 5 3/4	.40	...	1.90	1.90	10 x 12	1.10	...	5.60	10.55
3 3/2 x 4 3/4	.35	...	1.70	1.70	10 x 14	1.20	...	6.50	12.30
3 3/2 x 5 1/2	.40	...	2.00	2.00	10 x 16	1.35	...	7.10	13.45
3 3/4 x 5 1/2	.40	...	1.95	1.95	11 x 14	1.65	...	8.35	15.80
4 x 5	.40	...	1.90	1.90	12 x 15	1.60	...	8.35	15.80
4 x 6	.45	...	2.15	2.15	12 x 16	1.70	...	8.90	16.75
4 1/4 x 5 1/4	.45	...	2.10	2.10	12 x 17	1.75	...	9.40	17.75
4 1/4 x 5 1/2	.45	...	2.15	2.15	12 x 20	2.10	...	11.00	20.85
4 1/4 x 6 1/2	.55	...	2.50	2.50	14 x 17	2.05	...	10.80	20.50
4 1/2 x 5 1/2	.55	...	2.25	2.25	16 x 20	2.65	...	14.30	27.45
4 3/4 x 6 1/2	.55	...	2.85	2.85	18 x 22	3.25	...	17.50	33.80
5 x 7	\$.35	...	\$1.70	3.15	20 x 24	3.85	...	21.05	40.75
5 x 8	.40	...	2.05	3.65					

All other sizes to be considered as special. Special sizes furnished at prices 10% greater than the next larger listed size for sizes up to 5 x 7, and 5% greater than the next larger listed size for sizes larger than 5 x 7.

ROLLS

10-ft. Rolls 10-yd. Rolls 10-ft. Rolls 10-yd. Rolls
20 inches wide \$2.00 \$4.75 40 inches wide \$3.70 \$9.25

Special narrow width rolls will be furnished when ordered in sufficient quantities to take the full width of a roll 40 inches wide.

Kodak Velvet Green—Double Weight

Sizes	1 Dz.	2 Dz.	1/2 Gro.	Gro.	Sizes	1 Dz.	2 Dz.	1/2 Gro.	Gro.
1 1/2 x 2 3/4	\$.25	\$.90	2 3/4 x 3 3/4	.30	\$1.40
2 1/4 x 3 1/4	.30	1.00	2 3/4 x 4 1/2	.30	1.50
2 1/2 x 3 1/2	.30	1.20	2 7/8 x 4 7/8	.45	1.70
2 1/2 x 4 1/4	.30	...	1.40	1.40	3 x 4	.45	1.50

Kodak Velvet Green—Double Weight—Continued

Sizes	1 Dz.	2 Dz.	½ Gro.	Gro.	Sizes	Dz.	½ Gro.	Gro.
3 x 4 3/4	...	\$4.45	...	\$1.75	6 1/2 x 8 1/2	\$.70	\$3.40	\$6.20
3 1/8 x 5 1/845	...	1.95	7 x 9	.75	3.80	7.00
3 1/4 x 4 1/445	...	1.70	7 x 10	.90	4.15	7.75
3 1/4 x 4 7/845	...	1.95	7 x 11	.90	4.55	8.45
3 1/4 x 5 1/845	...	2.15	7 1/2 x 9 1/2	.90	4.30	7.90
3 1/2 x 4 1/245	...	1.90	8 x 10	.90	4.75	8.75
3 1/2 x 5 1/250	...	2.25	8 x 10 1/2	.95	5.05	9.40
3 1/2 x 5 3/850	...	2.40	8 x 11	1.15	5.30	9.80
3 3/4 x 4 3/445	...	2.15	8 1/2 x 11	1.20	5.55	10.40
3 3/4 x 5 1/450	...	2.45	8 x 12	1.20	5.75	10.65
3 4/8 x 5 1/250	...	2.40	9 x 11	1.20	5.95	10.90
4 x 655	...	2.70	10 x 12	1.40	7.00	13.20
4 1/4 x 5 1/455	...	2.65	10 x 14	1.50	8.15	15.40
4 1/4 x 5 1/255	...	2.70	11 x 14	1.70	8.90	16.80
4 1/4 x 6 1/270	...	3.15	12 x 15	2.00	10.45	19.75
4 1/4 x 5 3/870	...	2.80	12 x 16	2.15	11.15	20.95
4 3/4 x 6 1/270	...	3.45	12 x 17	2.20	11.75	22.20
5 x 7	\$.45	...	\$2.15	3.95	12 x 20	2.65	13.75	26.05
5 x 850	...	4.55	14 x 17	2.55	13.50	25.65
5 1/2 x 7 3/4	.55	...	2.65	4.80	16 x 20	3.30	17.90	34.30
6 x 8	.55	...	2.95	5.40	18 x 22	4.05	21.90	42.25
6 x 9	.70	...	3.30	6.00	20 x 24	4.80	26.30	50.95
6 x 10	.75	...	3.65	6.70				

All other sizes to be considered as special. Special sizes furnished at prices 10% greater than the next larger listed size for sizes up to 5 x 7 and 5% greater than the next larger listed size for sizes larger than 5 x 7.

ROLLS

10-ft. Rolls	10-yd. Rolls	10-ft. Rolls	10-yd. Rolls
20 inches wide	\$2.40	\$6.05	40 inches wide \$4.50 \$11.65

Special narrow width rolls will be furnished when ordered in sufficient quantities to take the full width of a roll 40 inches wide.

Azo Papers

AZO is a developing-out paper having a quality not equaled by any other paper selling at anywhere near Azo prices. As Azo is made in various degrees of contrast as well as in a great variety of surfaces, it is necessary to mention both the letter, indicating surface, and number, indicating contrast when ordering from your dealer.

Azo Papers—Single Weight

The degree of contrast in Azo emulsions is designated by Nos. 0, 1, 2, 3, 4 and 5.

The grade is designated as follows:

- GRADE A—Smooth (white) absolute matte (No. 2)
- **GRADE C—Glossy (Pense) (Nos. 0, 1, 2, 3, 4, 5)
- GRADE E—Smooth (white) semi-matte (Nos. 0, 1, 2, 3, 4, 5)
- **GRADE F—Glossy (white) (Nos. 0, 1, 2, 3, 4, 5)
- †GRADE G—Glossy (white) (Nos. 0, 1, 2, 3, 4, 5)
- GRADE K—Smooth (cream white) semi-matte (Nos. 2, 3, 4)

Azo Papers—Single Weight—Continued

Sizes	1 Dz.	2 Dz.	½ Gro.	Gro.	Sizes	1 Dz.	½ Gro.	Gro.
1 1/8 x 2 3/4	...	\$1.15	...	\$5.50	5 1/2 x 7 3/4	\$.35	...	\$1.55 \$2.85
2 1/4 x 3 1/42060	6 x 8	.35	...	1.75 3.20
2 1/2 x 3 1/22070	6 x 9	.40	...	1.95 3.55
2 3/4 x 3 3/42080	6 x 10	.45	...	2.15 3.95
2 3/8 x 3 3/82080	6 1/2 x 8 1/2	.40	...	2.00 3.65
2 3/4 x 4 1/42090	7 x 9	.45	...	2.25 4.15
2 3/8 x 4 3/825	...	1.00	7 x 10	.50	...	2.45 4.60
2 3/4 x 4 7/82590	7 x 11	.50	...	2.70 5.00
3 x 425	...	1.05	7 1/2 x 9 1/2	.50	...	2.55 4.60
3 x 4 3/425	...	1.15	8 x 10	.55	...	2.80 5.20
3 1/8 x 5 1/825	...	1.00	8 x 10 1/2	.55	...	3.00 5.55
3 1/4 x 4 1/425	...	1.15	8 x 11	.65	...	3.15 5.80
3 1/4 x 4 7/825	...	1.25	8 1/2 x 11	.70	...	3.30 6.15
3 1/4 x 5 1/225	...	1.10	8 x 12	.70	...	3.40 6.30
3 1/2 x 4 1/230	...	1.35	9 x 11	.70	...	3.50 6.45
3 1/2 x 5 1/230	...	1.40	10 x 12	.80	...	4.15 7.80
3 3/4 x 4 3/425	...	1.25	10 x 14	.90	...	4.80 9.10
3 3/4 x 5 1/230	...	1.45	11 x 14	1.00	...	5.25 9.95
3 3/8 x 4 3/425	...	1.40	12 x 15	1.20	...	6.20 11.70
3 3/8 x 5 1/230	...	1.60	12 x 16	1.25	...	6.60 12.40
4 x 530	...	1.40	12 x 17	1.30	...	6.95 13.15
4 x 635	...	1.60	12 x 20	1.55	...	8.15 15.45
4 1/4 x 5 1/435	...	1.55	12 x 20	1.55	...	8.15 15.45
4 1/4 x 5 1/235	...	1.60	12 x 17	1.30	...	6.95 13.15
4 1/4 x 6 1/240	...	1.85	14 x 17	1.50	...	8.00 15.20
4 1/2 x 5 1/240	...	1.65	16 x 20	1.95	...	10.60 20.35
4 1/2 x 6 1/240	...	2.10	18 x 22	2.40	...	12.95 25.05
5 x 7	\$.25	...	\$1.25	2.35	20 x 24	2.85	...	15.60 30.20
5 x 8	.30	...	1.50	2.70				

All other sizes to be considered as special. Special sizes furnished at prices 10% greater than the next larger listed size for sizes up to 5 x 7, and 5% greater than the next larger listed size for sizes larger than 5 x 7.

**For use on Ferrotype plates, not with belt dryers.

†For use with belt dryers, not on Ferrotype plates.

AZO PAPER IN ROLLS—Single Weight

Sizes	Per Roll	Sizes	Per Roll
1 3/8 in. x 200 ft.	\$2.50	8 in. x 50 ft.	\$2.55
2 1/8 in. x 200 ft.	3.35	8 in. x 100 ft.	4.65
2 3/8 in. x 200 ft.	3.50	10 in. x 50 ft.	3.05
2 5/8 in. x 200 ft.	3.60	10 in. x 100 ft.	3.05
5 in. x 100 ft.	3.45	20 in. x 10 ft.	1.50
6 in. x 50 ft.	2.15	20 in. x 10 yds.	3.55
6 in. x 100 ft.	3.55	40 in. x 10 ft.	2.80
6 1/2 in. x 50 ft.	2.25	40 in. x 10 yds.	6.85
6 1/2 in. x 100 ft.	3.90		

Special narrow width rolls will be furnished when ordered in sufficient quantities to take the full width of a roll 40 inches wide.

STEREO DIE CUT AZO

Per Gross \$1.70	Per 2 Dozen \$3.55
Furnished in Grades C and F, Single Weight.			

Azo Papers—Double Weight

GRADE A—Smooth (white) absolute matte (Nos. 1, 2)
 GRADE AA—Smooth (white) slight lustre (Nos. 1, 2)
 GRADE B—Rough (white) absolute matte (Nos. 2)
 GRADE E—Smooth (white) semi-matte (Nos. 0, 1, 2, 3, 4, 5)
 GRADE F—Glossy (white) (Nos. 0, 1, 2, 3, 4, 5)
 GRADE H—Smooth (buff) absolute matte (Nos. 1, 2)
 GRADE K—Smooth (cream white) semi-matte (Nos. 2, 3)
 GRADE R—Linen (white) (Nos. 1, 3, 5)
 GRADE S—Linen (buff) (Nos. 1, 3, 5)

Sizes	1 Dz.	2 Dz.	½ Gro.	Gro.	Sizes	1 Dz.	½ Gro.	Gro.
17½ x 23¼	.. \$2.20	.. \$6.65			5½ x 7¾	.. \$4.45	.. \$1.95	.. \$3.55
2¼ x 3¼	.. .25	.. .75			6 x 8	.. .45	.. 2.20	.. 4.00
2¼ x 3½	.. .25	.. .75			6 x 9	.. .50	.. 2.45	.. 4.45
2¼ x 4¼	.. .25	.. 1.00			6 x 10	.. .55	.. 2.70	.. 4.95
2¾ x 3¾	.. .25	.. 1.00			6½ x 8½	.. .50	.. 2.50	.. 4.55
2¾ x 4½	.. .25	.. 1.15			7 x 9	.. .55	.. 2.80	.. 5.20
2¾ x 4¾	.. .30	.. 1.25			7 x 10	.. .65	.. 3.05	.. 5.75
3 x 4	.. .30	.. 1.15			7 x 11	.. .65	.. 3.40	.. 6.25
3 x 4¾	.. .30	.. 1.30			7½ x 9½	.. .65	.. 3.20	.. 5.75
3½ x 5½	.. .30	.. 1.45			8 x 10	.. .70	.. 3.50	.. 6.50
3¼ x 4¼	.. .30	.. 1.25			8 x 10½	.. .70	.. 3.75	.. 6.95
3¼ x 4¾	.. .30	.. 1.45			8 x 11	.. .80	.. 3.95	.. 7.25
3¼ x 5½	.. .30	.. 1.55			8½ x 11	.. .90	.. 4.15	.. 7.70
3½ x 4½	.. .30	.. 1.40			8 x 12	.. .90	.. 4.25	.. 7.90
3½ x 5½	.. .40	.. 1.70			9 x 11	.. .90	.. 4.40	.. 8.05
3½ x 5¾	.. .40	.. 1.75			10 x 12	.. 1.00	.. 5.20	.. 9.75
3¾ x 4¾	.. .30	.. 1.55			10 x 14	.. 1.15	.. 6.00	.. 11.40
3¾ x 5½	.. .40	.. 1.80			11 x 14	.. 1.25	.. 6.55	.. 12.45
4 x 5	.. .40	.. 1.75			12 x 15	.. 1.50	.. 7.75	.. 14.65
4 x 6	.. .45	.. 2.00			12 x 16	.. 1.55	.. 8.25	.. 15.50
4¼ x 5¼	.. .45	.. 1.95			12 x 17	.. 1.65	.. 8.70	.. 16.45
4¼ x 5½	.. .45	.. 2.00			12 x 20	.. 1.95	.. 10.20	.. 19.30
4¼ x 6½	.. .50	.. 2.30			14 x 17	.. 1.90	.. 10.00	.. 19.00
4½ x 5½	.. .50	.. 2.05			16 x 20	.. 2.45	.. 13.25	.. 25.45
4¾ x 6½	.. .50	.. 2.60			18 x 22	.. 3.00	.. 16.20	.. 31.30
5 x 7	.. \$3.40	.. \$1.55	.. 2.95		20 x 24	.. 3.55	.. 19.50	.. 37.75
5 x 8	.. .40	.. 1.90	.. 3.40					

All other sizes to be considered as special. Special sizes furnished at prices 10% greater than the next larger size for sizes up to 5 x 7, and 5% greater than the next larger listed size for sizes larger than 5 x 7.

AZO PAPER IN ROLLS—Double Weight

Sizes	Per Roll	Sizes	Per Roll
13½ in. x 200 ft.	.. \$3.30	8 in. x 50 ft.	.. \$3.15
2½ in. x 200 ft.	.. 4.50	8 in. x 100 ft.	.. 5.80
2½ in. x 200 ft.	.. 4.65	10 in. x 50 ft.	.. 3.80
2½ in. x 200 ft.	.. 4.80	10 in. x 100 ft.	.. 7.10
5 in. x 100 ft.	.. 4.30	20 in. x 10 ft.	.. 1.80
6 in. x 50 ft.	.. 2.60	20 in. x 10 yds.	.. 4.50
6 in. x 100 ft.	.. 4.40	40 in. x 10 ft.	.. 3.40
6½ in. x 50 ft.	.. 2.75	40 in. x 10 yds.	.. 8.70
6½ in. x 100 ft.	.. 4.85		

Special narrow width rolls will be furnished when ordered in sufficient quantities to take the full width of a roll 40 inches wide.

Azo for Photo Finishers

500-Sheet Packages

Single Weight	Double Weight	Double Weight
*GRADE C—(Nos. 0, 1, 2, 3, 4, 5)		GRADE E—(Nos. 0, 1, 2, 3, 4, 5)
GRADE E—(Nos. 0, 1, 2, 3, 4, 5)		GRADE F—(Nos. 0, 1, 2, 3, 4, 5)
*GRADE F—(Nos. 0, 1, 2, 3, 4, 5)		GRADE K—(Nos. 2, 3)
GRADE G—(Nos. 0, 1, 2, 3, 4, 5)		GRADE R—(Nos. 1, 3, 5)
GRADE K—(Nos. 2, 3, 4)		GRADE S—(Nos. 1, 3, 5)

Sizes	Single Weight	Double Weight	Sizes	Single Weight	Double Weight
17½ x 23¼	.. \$1.60	.. \$2.00	3½ x 4½	.. \$3.50	.. \$4.40
2¼ x 3¼	.. 1.90	.. 2.40	3½ x 5½	.. 4.25	.. 5.30
2¼ x 3½	.. 2.20	.. 2.75	3½ x 5¾	.. 4.40	.. 5.50
2¼ x 4¼	.. 2.50	.. 3.15	3¾ x 4¾	.. 3.95	.. 4.95
2¾ x 3¾	.. 2.50	.. 3.15	3¾ x 5½	.. 4.55	.. 5.70
2¾ x 4½	.. 2.85	.. 3.55	4 x 5	.. 4.40	.. 5.50
2¾ x 4¾	.. 3.15	.. 3.95	4 x 6	.. 5.05	.. 6.30
3 x 4	.. 2.85	.. 3.55	4¼ x 5¼	.. 4.90	.. 6.15
3 x 4¾	.. 3.30	.. 4.15	4¼ x 5½	.. 5.05	.. 6.30
3½ x 5½	.. 3.60	.. 4.50	4¼ x 6½	.. 5.85	.. 7.30
3¼ x 4¼	.. 3.15	.. 3.95	4½ x 5½	.. 5.20	.. 6.50
3¼ x 4¾	.. 3.60	.. 4.50	4½ x 6½	.. 6.60	.. 8.25
3¼ x 5½	.. 3.95	.. 4.95	5 x 7	.. 7.40	.. 9.25

All other sizes to be considered as special. Special sizes up to 5 x 7 furnished at prices 10% greater than the next larger listed size.

*For use with belt dryers, not on Ferrotypes plates.

*For use on Ferrotypes plates, not with belt dryers.

AZO PAPER IN 250, 500 AND 1000 FOOT ROLLS

Width of Roll	Single Weight	Double Weight	Width of Roll	Single Weight	Double Weight
Inches	500 ft.	1,000 ft.	Inches	500 ft.	1,000 ft.
1½	\$5.50	\$10.35	\$4.00	\$7.30	
2¼	6.45	12.05	4.65	8.40	
2½	7.05	13.20	5.00	9.15	
2¾	7.30	13.75	5.20	9.50	
2¾	7.60	14.35	5.40	9.90	
2¾	7.90	14.90	5.55	10.25	
3½	8.45	16.05	5.95	11.00	
3¼	8.75	16.60	6.10	11.35	
3½	9.35	17.80	6.50	12.10	
3¾	9.65	18.35	6.70	12.45	
3¾	9.90	18.95	6.85	12.85	

Splicing Allowances

250-ft. roll, 2 splices 500-ft. roll, 3 splices 1,000-ft. roll, 4 splices

Wound on strawboard core 1½" in diameter. When ordered on special core, extra charge to be made to cover cost of same.

Rolls of width not listed, but length listed above, when ordered in quantities sufficient to take the full width of a 40-inch roll, will be supplied at the price of the next wider listed size increased by 10%.

Eastman Portrait Bromide

FOR enlarging or projection printing from portrait negatives there is no paper that so completely meets the requirements of the portrait photographer. Eastman Portrait Bromide is furnished in Old Master and Rough Lustre surfaces in both white and buff stocks. It produces brilliant prints, full of gradation and may be redeveloped to a beautiful sepia.

Eastman Portrait Bromide—Double Weight

D (White), Rough Lustre E (Buff), Rough Lustre					M (White), Old Master O (Buff), Old Master				
Sizes	1 Dz.	2 Dz.	½ Gro.	Gro.	Sizes	1 Dz.	½ Gro.	Gro.	
3½ x 5½	\$.65	\$3.00	8 x 10½	\$1.15	...	\$6.25 \$11.55	
4 x 6	.75	3.30	8 x 11	1.40	...	6.55 12.15	
4¼ x 6½	.80	3.90	8½ x 11	1.45	...	6.90 12.80	
4¾ x 6¾	.80	4.40	8 x 12	1.45	...	7.15 13.15	
5 x 7	\$.50	\$2.65 4.95	9 x 11	1.45	...	7.30 13.45	
5 x 8	.85	3.15 5.65	10 x 12	1.70	...	8.70 16.30	
5½ x 7¾	.75	3.25 5.95	10 x 14	1.90	...	10.00 19.00	
6 x 8	.75	3.65 6.70	11 x 14	2.05	...	10.95 20.75	
6 x 9	.80	4.05 7.45	12 x 15	2.50	...	12.95 24.45	
6 x 10	.95	4.50 8.25	12 x 16	2.65	...	13.75 25.90	
6½ x 8½	.80	4.20 7.65	12 x 17	2.70	...	14.50 27.45	
7 x 9	.95	4.70 8.70	12 x 20	3.25	...	17.00 32.25	
7 x 10	1.05	5.15 9.65	14 x 17	3.15	...	16.70 31.75	
7 x 11	1.05	5.65 10.45	16 x 20	4.05	...	22.15 42.50	
7½ x 9½	1.05	5.30 9.65	18 x 22	5.00	...	27.05 52.30	
8 x 10	1.05	5.90 10.90	20 x 24	5.95	...	32.55 63.05	

All other sizes to be considered as special. Special sizes furnished at prices 10% greater than the next larger listed size for sizes up to 5 x 7, and 5% greater than the next larger listed size for sizes larger than 5 x 7.

ROLLS

10-ft. Rolls 10-yd. Rolls			10-ft. Rolls 10-yd. Rolls		
20 inches wide	\$.295	\$7.35	40 inches wide	\$.555	\$14.20

Special narrow width rolls will be furnished when ordered in sufficient quantities to take the full width of a roll 40 inches wide.

Eastman Royal Bromide

A PAPER of pleasing color and texture for general enlarging.

Smooth (buff), Semi-matte, Medium weight

Sizes	1 Dz.	2 Dz.	½ Gro.	Gro.	Sizes	1 Dz.	½ Gro.	Gro.
3½ x 5½	\$.65	\$3.05	5 x 8	\$.65	...	\$3.15 \$5.65
4 x 6	.75	3.35	5½ x 7¾	.75	...	3.25 6.00
4¼ x 6½	.85	3.90	6 x 8	.75	...	3.70 6.70
4¾ x 6¾	.85	4.40	6 x 9	.85	...	4.10 7.45
5 x 7	\$.55	\$2.65 4.95	6 x 10	.95	...	4.50 8.30

Eastman Royal Bromide—Continued

Sizes	1 Dz.	½ Gro.	Gro.	Sizes	1 Dz.	½ Gro.	Gro.
6½ x 8½	\$.85	...	\$4.20 \$7.65	10 x 12	\$1.70	...	\$8.70 \$16.40
7 x 9	.95	...	4.75 8.70	10 x 14	1.90	...	10.10 19.10
7 x 10	1.05	...	5.15 9.65	11 x 14	2.10	...	11.05 20.90
7 x 11	1.05	...	5.65 10.50	12 x 15	2.50	...	13.00 24.55
7½ x 9½	1.05	...	5.35 9.65	12 x 16	2.65	...	13.85 26.05
8 x 10	1.05	...	5.90 10.90	12 x 17	2.75	...	14.60 27.60
8 x 10½	1.15	...	6.30 11.65	12 x 20	3.25	...	17.10 32.45
8 x 11	1.35	...	6.60 12.20	14 x 17	3.15	...	16.80 31.90
8½ x 11	1.45	...	6.95 12.90	16 x 20	4.10	...	22.25 42.75
8 x 12	1.45	...	7.15 13.25	18 x 22	5.05	...	27.20 52.60
9 x 11	1.45	...	7.35 13.55	20 x 24	6.00	...	32.75 63.40

All other sizes to be considered as special. Special sizes furnished at prices 10% greater than the next larger listed size for sizes up to 5 x 7, and 5% greater than the next larger listed size for sizes larger than 5 x 7.

ROLLS

10-ft. Rolls 10-yd. Rolls		10-ft. Rolls 10-yd. Rolls			
20 inches wide	\$.300	\$7.35	40 inches wide	\$.565	\$14.20

Special narrow width rolls will be furnished when ordered in sufficient quantities to take the full width of a roll 40 inches wide.

Eastman News Bromide

A PHYSICALLY hardened paper of excellent quality, specially suited to quick-finish enlarging necessary in news photography.

Single Weight

Glossy (White), Normal, Medium and Contrast

Sizes	Dozen	½ Gro.	Gro.	Sizes	Dozen	½ Gro.	Gro.
5 x 7	\$.35	\$1.75	\$3.30	14 x 17	\$2.10	\$11.30	\$21.45
6½ x 8½	.55	2.80	5.15	16 x 20	2.75	14.95	28.70
8 x 10	.75	3.95	7.35	18 x 22	3.40	18.95	35.30
10 x 12	1.15	5.85	11.00	20 x 24	4.00	22.00	42.60
11 x 14	1.40	7.40	14.05				

All other sizes to be considered as special. Special sizes furnished at prices 5% greater than the next larger listed size for sizes larger than 5 x 7.

ROLLS

10-ft. Rolls 10-yd. Rolls		10-ft. Rolls 10-yd. Rolls			
20 inches wide	\$.200	\$4.85	40 inches wide	\$.375	\$9.35

Special narrow width rolls will be furnished when ordered in sufficient quantities to take the full width of a roll 40 inches wide.

P. M. C. Bromide

P. M. C. Bromide is an excellent, moderate priced paper for commercial and photo finishing enlarging.

P. M. C. Bromide—Single Weight

- GRADE No. 1—Glossy (White) *Regular* and *Contrast*
- GRADE No. 2—Smooth, Semi-matte (White), *Regular* and *Contrast*
- GRADE No. 3—Medium Rough, Absolute Matte (White), *Regular* and *Contrast*
- GRADE No. 4—Glossy (Pensé) *Regular*
- GRADE No. 5—Smooth, Absolute Matte (White), *Regular*

P. M. C. Bromide—Continued

Sizes	1 Dz.	2 Dz.	½ Gro.	Gro.	Sizes	1 Dz.	½ Gro.	Gro.
3½ x 5½	...	\$4.00	...	\$2.05	8 x 10½	\$8.80	...	\$4.25 \$7.85
4 x 650	...	2.25	8 x 11	.90	...	4.45 8.20
4¼ x 6½55	...	2.60	8½ x 11	1.00	...	4.65 8.65
4¾ x 6¾55	...	2.95	8 x 12	1.00	...	4.80 8.90
5 x 7	\$3.35	...	\$1.75	3.30	9 x 11	1.00	...	4.95 9.10
5 x 8	.40	...	2.10	3.80	10 x 12	1.15	...	5.85 11.00
5½ x 7¾	.50	...	2.20	4.00	10 x 14	1.25	...	6.75 12.85
6 x 8	.50	...	2.45	4.50	11 x 14	1.40	...	7.40 14.05
6 x 9	.55	...	2.75	5.00	12 x 15	1.70	...	8.75 16.50
6 x 10	.65	...	3.05	5.55	12 x 16	1.75	...	9.30 17.50
6½ x 8½	.55	...	2.80	5.15	12 x 17	1.85	...	9.80 18.55
7 x 9	.65	...	3.15	5.85	12 x 20	2.20	...	11.50 21.80
7 x 10	.70	...	3.45	6.50	14 x 17	2.10	...	11.30 21.45
7 x 11	.70	...	3.80	7.05	16 x 20	2.75	...	14.95 28.70
7½ x 9½	.70	...	3.60	6.50	18 x 22	4.40	...	18.25 35.30
8 x 10	.75	...	3.95	7.35	20 x 24	4.00	...	22.00 42.60

All other sizes to be considered as special. Special sizes furnished at prices 10% greater than the next larger listed size for sizes up to 5 x 7, and 5% greater than the next larger listed size for sizes larger than 5 x 7.

ROLLS

10-ft. Rolls	10-yd. Rolls	10-ft. Rolls	10-yd. Rolls
20 inches wide	\$2.00	\$4.85	40 inches wide \$3.75 \$9.35

Special narrow width rolls will be furnished when ordered in sufficient quantities to take the full width of a roll 40 inches wide.

P. M. C. Bromide—Double Weight

GRADE No. 6—Smooth, Absolute Matte (White), *Regular*
 GRADE No. 7—Rough, Absolute Matte (White), *Regular, Medium and Contrast*

GRADE No. 8—Rough, Semi-matte (Buff), *Regular and Contrast*
 GRADE No. 9—Slightly Rough, Semi-gloss (White), *Regular, Medium and Contrast*

GRADE No. 10—Glossy (White), *Regular, Medium and Contrast*

Sizes	1 Dz.	2 Dz.	½ Gro.	Gro.	Sizes	1 Dz.	½ Gro.	Gro.
3½ x 5½	...	\$5.00	...	\$2.55	8 x 10½	\$1.00	...	\$5.30 \$9.80
4 x 665	...	2.80	8 x 11	1.15	...	5.55 10.25
4¼ x 6½70	...	3.25	8½ x 11	1.25	...	5.80 10.80
4¾ x 6¾70	...	3.70	8 x 12	1.25	...	6.00 11.15
5 x 7	\$4.45	...	\$2.20	4.15	9 x 11	1.25	...	6.20 11.40
5 x 8	.50	...	2.65	4.75	10 x 12	1.45	...	7.30 13.75
5½ x 7¾	.65	...	2.75	5.00	10 x 14	1.55	...	8.45 16.05
6 x 8	.65	...	3.05	5.65	11 x 14	1.75	...	9.25 17.55
6 x 9	.70	...	3.45	6.25	12 x 15	2.15	...	10.95 20.65
6 x 10	.80	...	3.80	6.95	12 x 16	2.20	...	11.65 21.90
6½ x 8½	.70	...	3.50	6.45	12 x 17	2.30	...	12.25 23.20
7 x 9	.80	...	3.95	7.30	12 x 20	2.75	...	14.40 27.25
7 x 10	.90	...	4.30	8.15	14 x 17	2.65	...	14.35 26.80
7 x 11	.90	...	4.75	8.80	16 x 20	3.45	...	18.70 35.90
7½ x 9½	.90	...	4.50	8.15	18 x 22	4.25	...	22.80 44.15
8 x 10	.95	...	4.95	9.20	20 x 24	5.00	...	27.50 53.25

All other sizes to be considered as special. Special sizes furnished at prices 10% greater than the next larger listed size for sizes up to 5 x 7, and 5% greater than the next larger listed size for sizes larger than 5 x 7.

P. M. C. Bromide—Double Weight—Continued

ROLLS

10-ft. Rolls	10-yd. Rolls	10-ft. Rolls	10-yd. Rolls
20 inches wide	\$2.50	\$6.30	40 inches wide \$4.75 \$12.15

Special narrow width rolls will be furnished when ordered in sufficient quantities to take the full width of a roll 40 inches wide.

Solar Bromide

Single weight, matte surface for contact printing

Line Solar Bromide

Single weight matte surface for contact printing

Normal and Contrast

Sizes	Gro.	500 Shs.	Sizes	Gro.	500 Shs.
6½ x 8½	\$2.90	\$9.00	14 x 17	\$12.15	\$37.75
8 x 10	4.15	12.90	16 x 20	16.30	50.65
9 x 11	5.15	16.00	18 x 22	20.05	62.30
11 x 14	7.95	24.70	20 x 24	24.15	75.00

All other sizes to be considered as special. Special sizes furnished at prices 5% greater than the next larger listed size for sizes larger than 5 x 7.

ROLLS

10-yds.	100 yds.
20-inch trimmed or 20½-inch untrimmed	\$3.05 \$27.15
40-inch trimmed or 41-inch untrimmed	5.65 51.50

Special narrow width rolls will be furnished when ordered in sufficient quantities to take the full width of a roll 40 inches wide.

Insurance Bromide

Single weight White Matte
 Grades A (75-gram) and B (95-gram)*

Insurance Bromide is an extremely fast and contrasty paper. Prices can be secured on application.

*In ordering, please specify which grade is wanted.

Eastman Kodak Bromide Paper

A single weight, semi-matte paper for making paper line negatives and prints of extreme contrast.

Sizes	Dz.	½ Gro.	Gro.	Sizes	Dz.	½ Gro.	Gro.
8 x 10	\$7.75	\$3.95	\$7.35	16 x 20	\$2.75	\$14.95	\$28.70
10 x 12	1.15	5.85	11.00	18 x 22	3.40	18.95	35.30
11 x 14	1.40	7.40	14.05	20 x 24	4.00	22.00	42.60
14 x 17	2.10	11.30	21.45				

All other sizes to be considered as special. Special sizes furnished at prices 5% greater than the next larger listed size for sizes larger than 5 x 7.

ROLLS

10-ft. Rolls	10-yd. Rolls	10-ft. Rolls	10-yd. Rolls
20 inches wide	\$2.00	\$4.85	40 inches wide \$3.75 \$9.35

Special narrow width rolls will be furnished when ordered in sufficient quantities to take the full width of a roll 40 inches wide.

Gelatin Printing-Out Paper

Solio, Glossy (Pensé)

Sizes	1 Dz.	2 Dz.	½ Gro.	Gro.	Sizes	1 Dz.	½ Gro.	Gro.	
3½ x 5½	...	\$.40	...	\$1.80	7½ x 9½	\$.65	...	\$3.20	\$5.75
4 x 540	...	1.75	8 x 10	.70	...	3.50	6.50
4 x 645	...	2.00	8 x 10½	.70	...	3.75	6.95
4¼ x 5¼45	...	1.95	8 x 11	.80	...	3.95	7.25
4¼ x 5¾45	...	2.00	8½ x 11	.90	...	4.15	7.70
4¼ x 6½50	...	2.30	8 x 12	.90	...	4.25	7.90
4½ x 5½50	...	2.05	9 x 11	.90	...	4.40	8.05
4¾ x 6½50	...	2.60	10 x 12	1.00	...	5.20	9.75
5 x 7	\$.30	...	\$1.55	2.95	10 x 14	1.15	...	6.00	11.40
5 x 8	.40	...	1.90	3.40	11 x 14	1.25	...	6.55	12.45
5½ x 7¾	.45	...	1.95	3.55	12 x 15	1.50	...	7.75	14.65
6 x 8	.45	...	2.20	4.00	12 x 16	1.55	...	8.25	15.50
6 x 9	.50	...	2.45	4.45	12 x 17	1.65	...	8.70	16.45
6 x 10	.55	...	2.70	4.95	12 x 20	1.95	...	10.20	19.30
6½ x 8½	.50	...	2.50	4.55	14 x 17	1.90	...	10.00	19.00
7 x 9	.55	...	2.80	5.20	16 x 20	2.45	...	13.25	25.45
7 x 10	.65	...	3.05	5.75	18 x 22	3.00	...	16.20	31.30
7 x 11	.65	...	3.40	6.25	20 x 24	3.55	...	19.50	37.75

Special sizes furnished at prices 10% greater than the next larger listed size for sizes up to 5 x 7, and 5% greater than the next larger listed size for sizes larger than 5 x 7.

ROLLS

10-ft. Rolls	10-yd. Rolls	10-ft. Rolls	10-yd. Rolls
20 inches wide	\$1.80	\$4.50	40 inches wide \$3.40 \$8.70

Special narrow width rolls will be furnished when ordered in sufficient quantities to take the full width of a roll 40 inches wide.

Eastman Proof Paper

Semi-matte or Glossy

Sizes	1 Dz.	2 Dz.	½ Gro.	Gro.	Sizes	1 Dz.	½ Gro.	Gro.	
3½ x 5½	...	\$.30	...	\$1.45	7½ x 9½	\$.50	...	\$2.55	\$4.60
4 x 530	...	1.40	8 x 10	.55	...	2.80	5.20
4 x 635	...	1.60	8 x 10½	.55	...	3.00	5.55
4¼ x 5¼35	...	1.55	8 x 11	.65	...	3.15	5.80
4¼ x 5¾35	...	1.60	8½ x 11	.70	...	3.30	6.15
4¼ x 6½40	...	1.85	8 x 12	.70	...	3.40	6.30
4½ x 5½40	...	1.65	9 x 11	.70	...	3.50	6.45
4¾ x 6½40	...	2.10	10 x 12	.80	...	4.15	7.80
5 x 7	\$.25	...	\$1.25	2.35	10 x 14	.90	...	4.80	9.10
5 x 8	.30	...	1.50	2.70	11 x 14	1.00	...	5.25	9.95
5½ x 7¾	.35	...	1.55	2.85	12 x 15	1.20	...	6.20	11.70
6 x 8	.35	...	1.75	3.20	12 x 16	1.25	...	6.60	12.40
6 x 9	.40	...	1.95	3.55	12 x 17	1.30	...	6.95	13.15
6 x 10	.45	...	2.15	3.95	12 x 20	1.55	...	8.15	15.45
6½ x 8½	.40	...	2.00	3.65	14 x 17	1.50	...	8.00	15.20
7 x 9	.45	...	2.25	4.15	16 x 20	1.95	...	10.60	20.35
7 x 10	.50	...	2.45	4.60	18 x 22	2.40	...	12.95	25.05
7 x 11	.50	...	2.70	5.00	20 x 24	2.85	...	15.60	30.20

Special sizes furnished at prices 10% greater than the next larger listed size for sizes up to 5 x 7, and 5% greater than the next larger listed size for sizes larger than 5 x 7.

Eastman Proof Paper—Continued

ROLLS

10-ft. Rolls	10-yd. Rolls	10-ft. Rolls	10-yd. Rolls
20 inches wide	\$1.50	\$3.55	40 inches wide \$2.80 \$6.85

Special narrow width rolls will be furnished when ordered in sufficient quantities to take the full width of a roll 40 inches wide.

Post Cards

Azo

- GRADE A—Smooth absolute matte (No. 2)
- GRADE E—Smooth (white) semi-matte (Nos. 1, 2, 3, 4)
- GRADE F—Glossy (white) (Nos. 1, 2, 3, 4)
- GRADE K—Smooth (cream white) semi-matte (Nos. 2, 3)

2 Dozen	Gross	500	5,000
\$.40	\$1.70	\$5.65	\$40.00

Velox

2 Dozen	Gross	500
\$.65	\$2.80	\$7.85

Kodak Velvet Green

2 Dozen	Gross	500
\$.50	\$2.35	\$7.80

Vitava Post Cards

ALBA No. 1 Soft	RAPID BLACK semi-matte
2 Dozen \$.50	Gross \$2.35
	500 \$7.80

P. M. C. Post Cards

No. 6, No. 9, No. 10
2 Dozen \$.50
Gross \$2.35
500 \$7.80
5,000 \$56.30

Double Post Cards

Azo, Velox and Kodak Velvet Green. All Regular Post Card Surfaces.

Azo	2 Dozen	Gross	500
Velox	\$.60	\$3.25	\$10.85
Kodak Velvet Green	.90	5.00	16.65
	.80	4.45	14.90

Odd Size Post Cards

Regularly or specially printed, will be supplied if 1,000 or more of one grade are ordered, on which we will be pleased to make special quotations.

Unprinted Post Cards

Measuring approximately 3¼ x 5¼ only. Same price as regularly printed cards. Not less than 1,000 of any grade furnished.

Special Printing on Post Cards

When ordered in lots of not less than 1,000 the name and address or souvenir line will be printed on end, top or bottom of cards at the following prices:

First 1,000	\$.150	Subsequent lots, per 1,000	\$.50
-------------	--------	----------------------------	-------

Number of Packages of Paper Per Case

The schedule below shows the number of packages per case of Azo, Bromide, Velox, Vitava, Solio and Proof Paper in different sizes.

It will assist us in giving service if dealers will place their orders in units to correspond with this list.

Single Weight				
Sizes	Packages of		500	
	1 Dz.	2 Dz.	½ Gro.	Gro. Shs.
1½ x 2¼	36	12
2¼ x 3¼	...	144	...	36
2½ x 3½	36	12
2¾ x 4¼	...	144	...	36
2¾ x 3¾	36	12
2¾ x 4¾	36	12
2¾ x 4½	...	144	...	36
3 x 4	36	12
3 x 4¾	36	12
3½ x 5½	36	12
3½ x 4¾	...	144	...	36
3½ x 4½	36	12
3½ x 5½	...	144	...	36
3½ x 5¼	36	12
3½ x 4¾	36	12
3½ x 5½	36	12
4 x 5	...	144	...	36
4 x 6	...	144	...	36
4¾ x 5¾	36	12
4¾ x 5½	36	12
4¾ x 6¾	36	12
4¾ x 5½	36	12

Double Weight

Double Weight				
Sizes	Packages of		500	
	1 Dz.	2 Dz.	½ Gro.	Gro. Shs.
4 x 6	24	...
5 x 7 †	48	...	24	12
5 x 7 **	96	...	24	12
5 x 8	12	...
5½ x 7¾	12	...
6 x 8	12	...
6 x 9	8	...
6 x 10	8	...
6½ x 8½†	36	...	12	8
6½ x 8½**	72	...	12	8
7 x 9	8	...
7 x 10	8	...

POST CARDS

2 Dz.	Gro.	5,000 Shs.
144	24	10

CIRKUT ROLLS

8-inch by 100 feet, and 10-inch by 100 feet—6 rolls per case.

*Azo and Velox, Solio and Proof, Vitava †Bromide ‡Azo, Velox, Bromide **Vitava



Eastman Kodak Stores, Inc.

806 Huron Road

347 Euclid Avenue

1915 East Ninth Street

CLEVELAND, OHIO